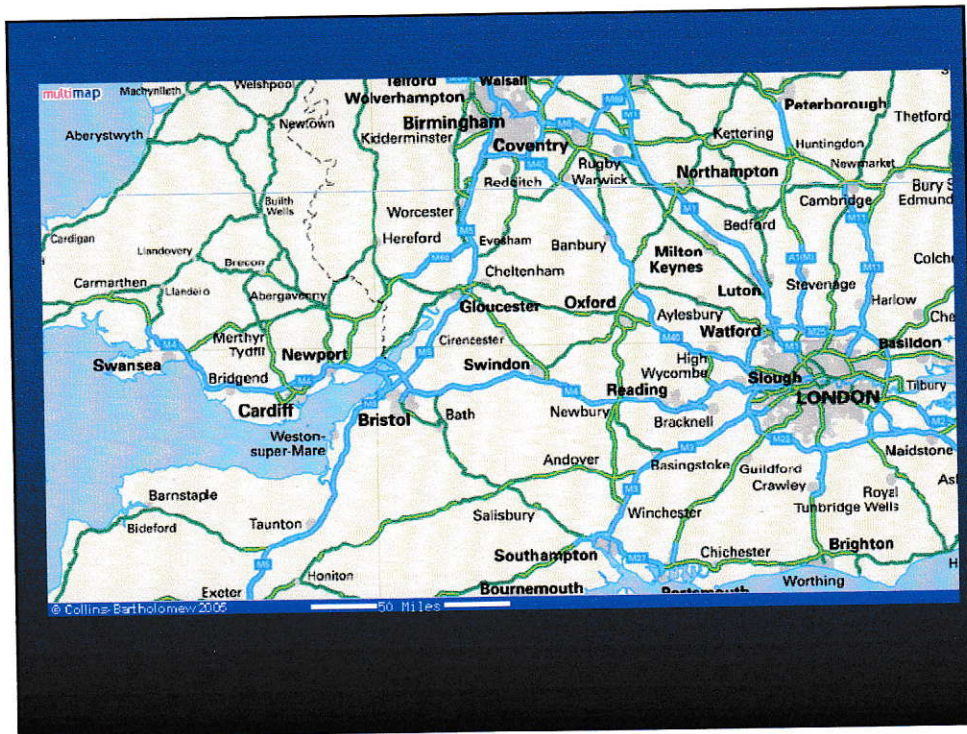


# Local Information





## Beckett House



## Clubs

Aerobics Club  
Alpine Skiing Club  
Archery Club  
Badminton Club  
Basketball Club  
Beagles  
Boxing Club  
Canoe Club  
Clay Target Club  
Cricket Club  
Gymnasium  
Fencing Club  
Football Club

Golf Club  
Hockey Club  
Judo Club  
Kiting Club  
Mountain Biking Club  
Mountaineering Club  
Netball Club  
Nordic Ski Club  
Orienteering Club  
Parachuting Club  
Polo Club

Rifle and Pistol Club  
Rowing Club  
Rugby Club  
Running Club  
Saddle Club  
Sailing Club  
Shrivenham Shoot Squash Club  
Sub Aqua  
Surfing  
Swimming Pool  
Tennis Club  
Triathlon Club  
Volleyball Club

## Sports



Uffington White Horse (1200 BC)

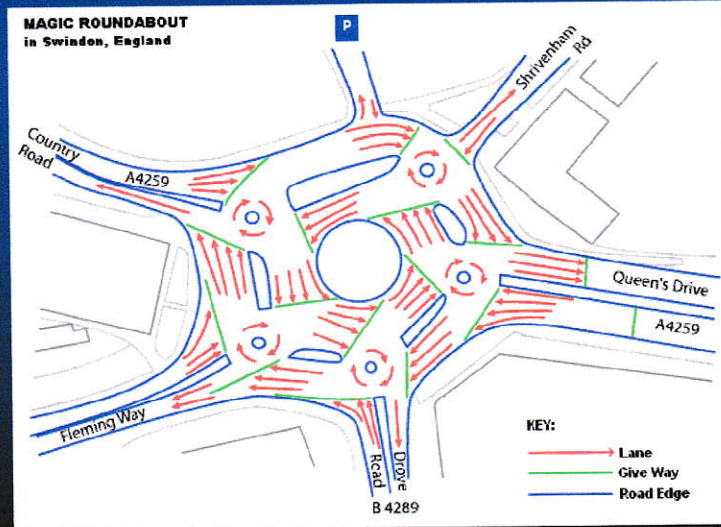


© Dave Collier - 2000

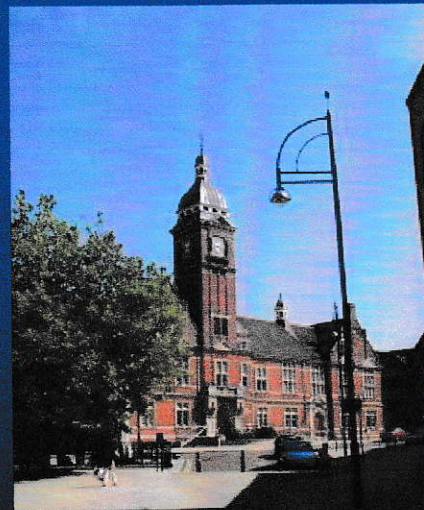
## Swindon Magic Roundabout



# Swindon Magic Roundabout



# Town Hall



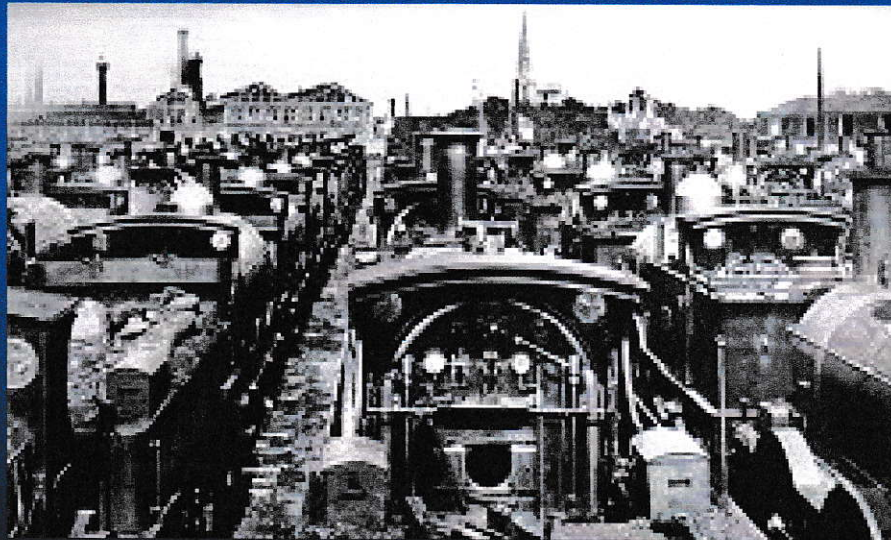
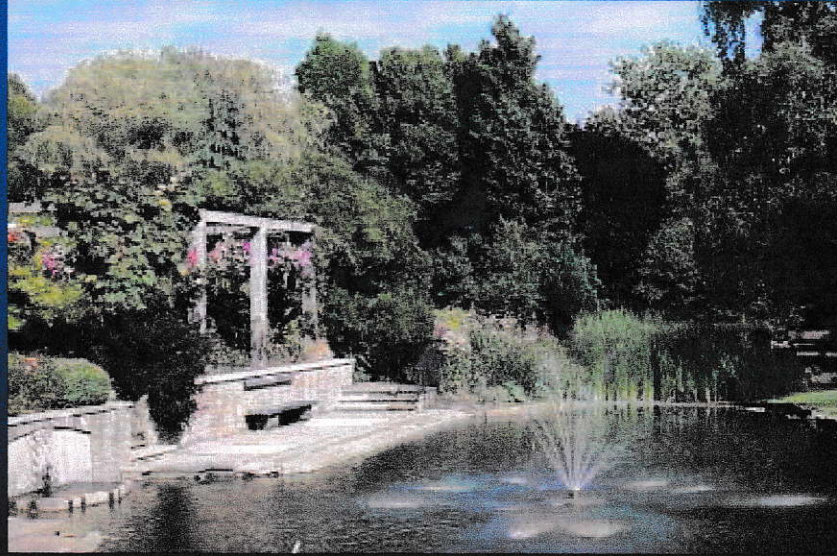
**Town Gardens**

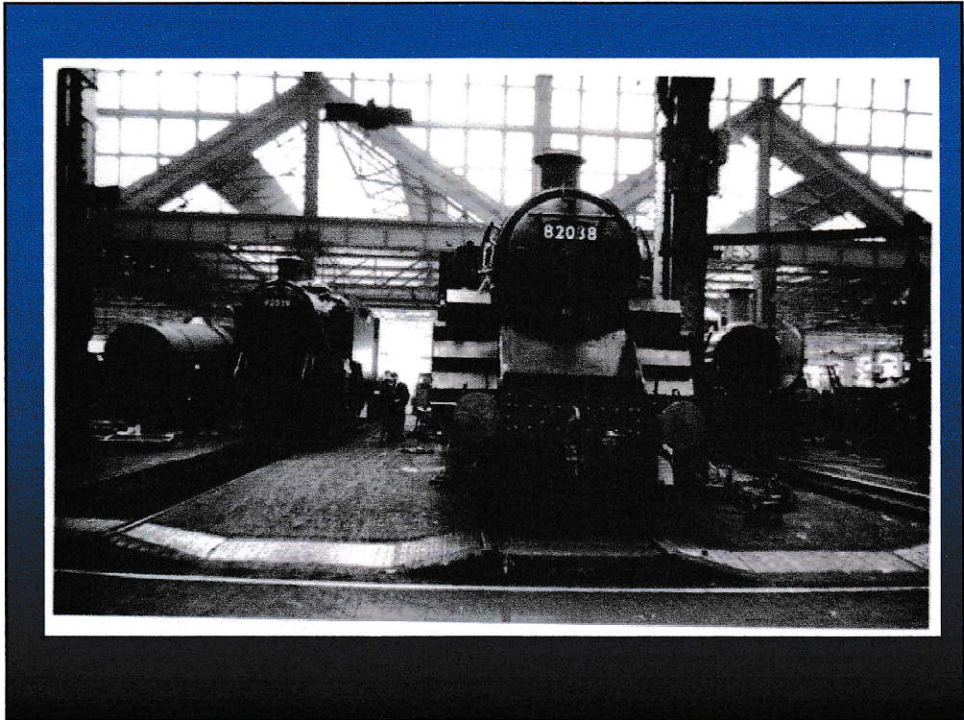


**Town Gardens**



## Swindon Queen's Park

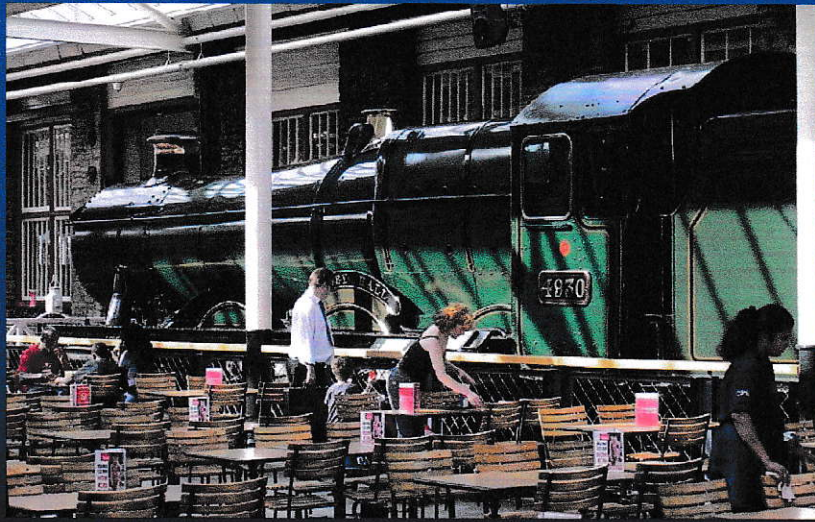




**City of Truro (100 mph in 1904)**







## Oxford Skyline



## Christchurch College



## Corpus Christi College



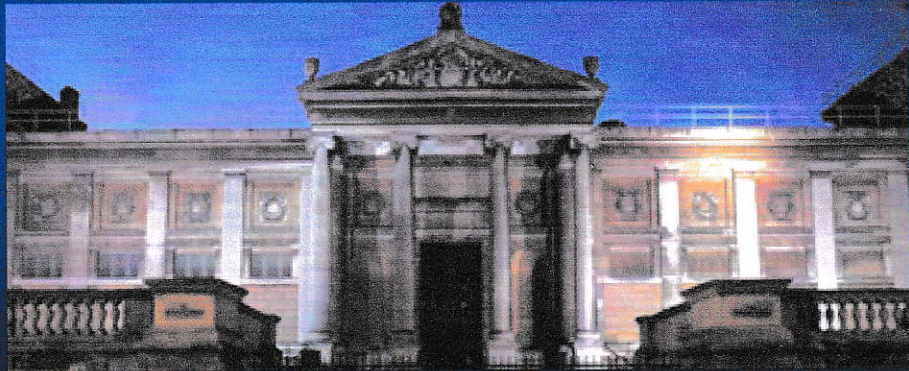
## Merton College



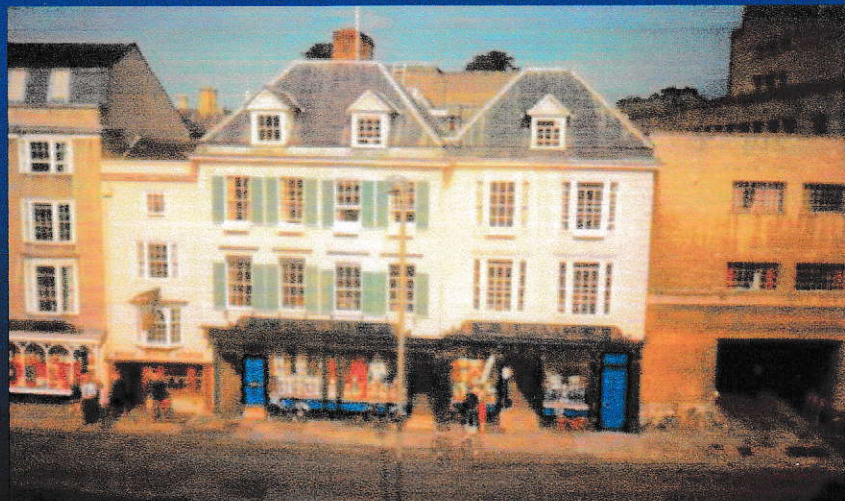
## St Catherine's College



## Ashmolean Museum



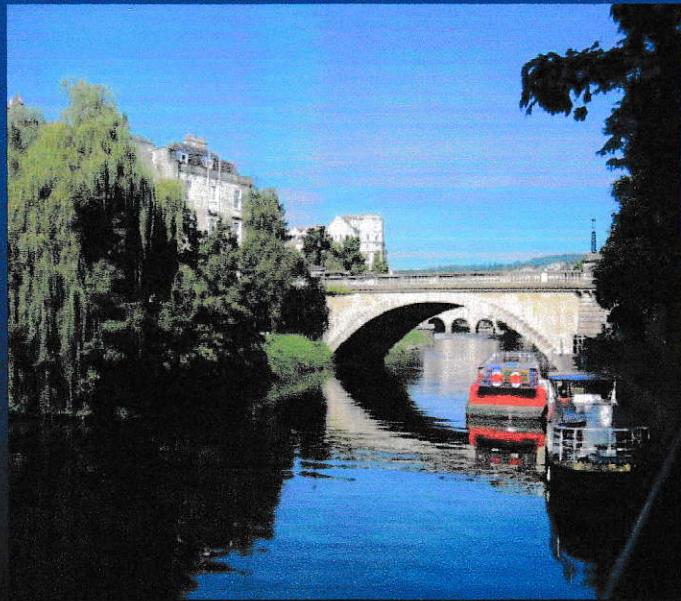
## Blackwell's Bookshop

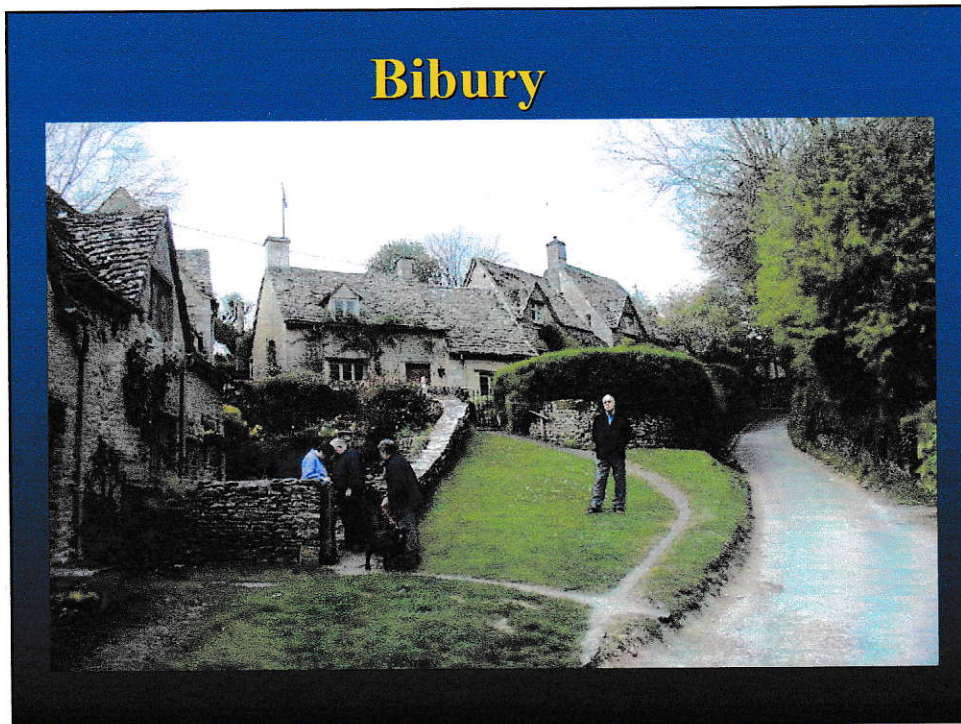
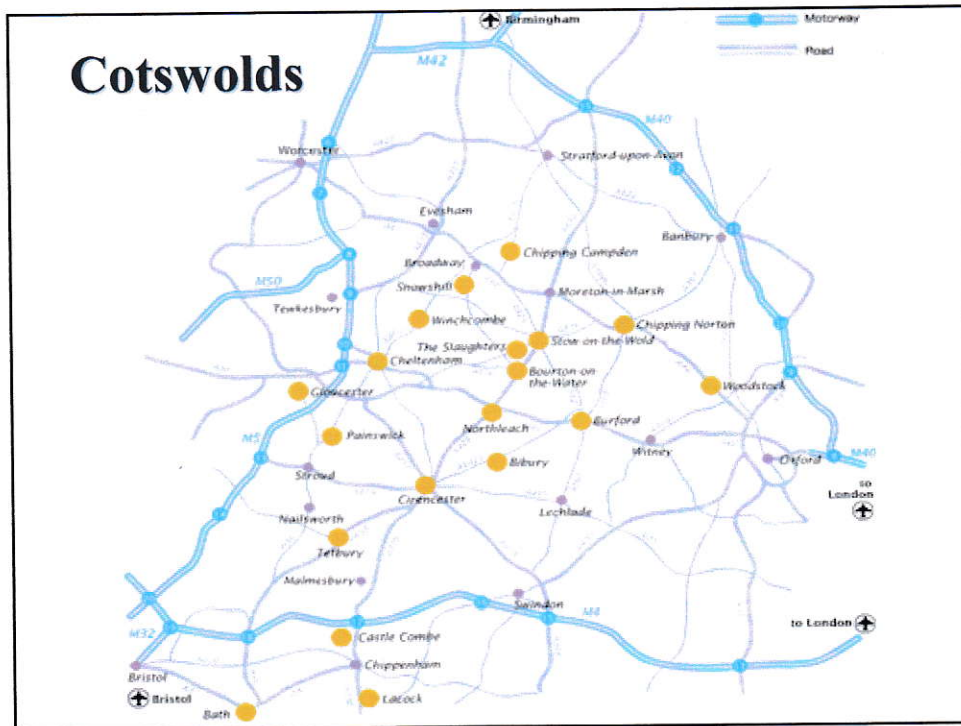


Bath (with Roman Baths)

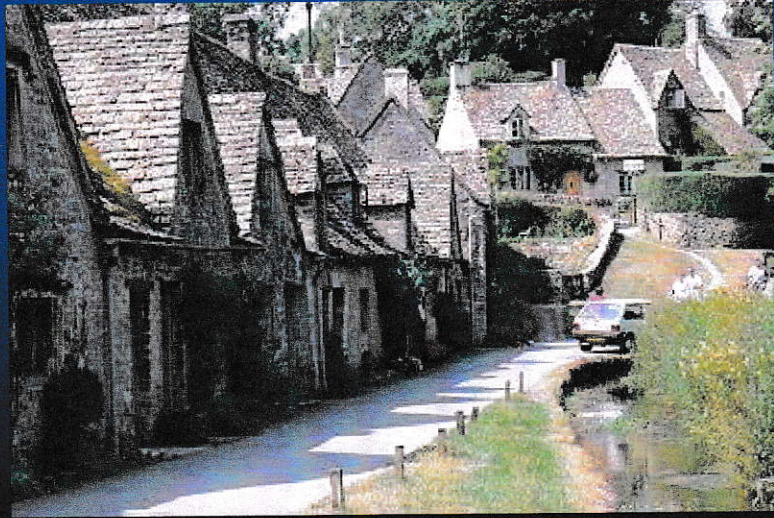


River Avon, Bath

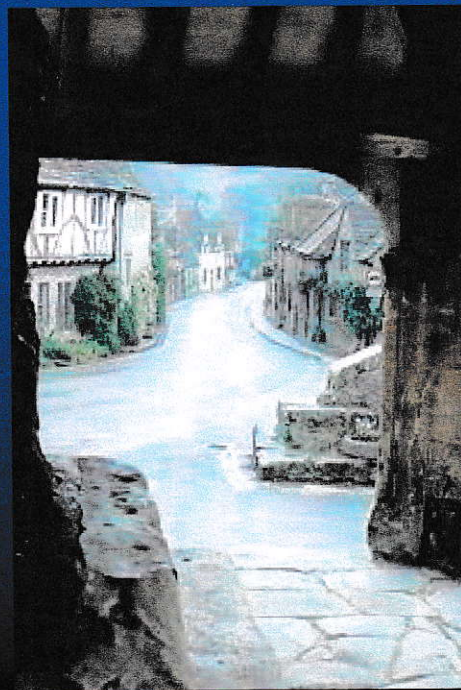




## Bibury



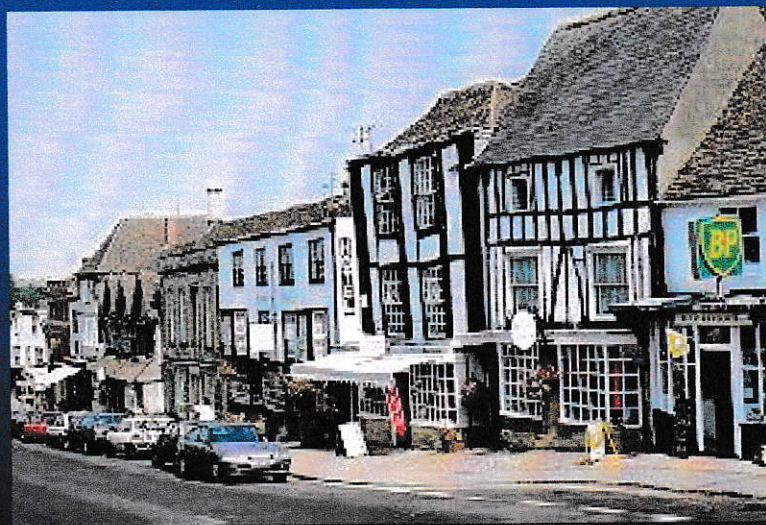
## Castle Coombe



Burford, Cotswolds



**Burford**





## Stonehenge

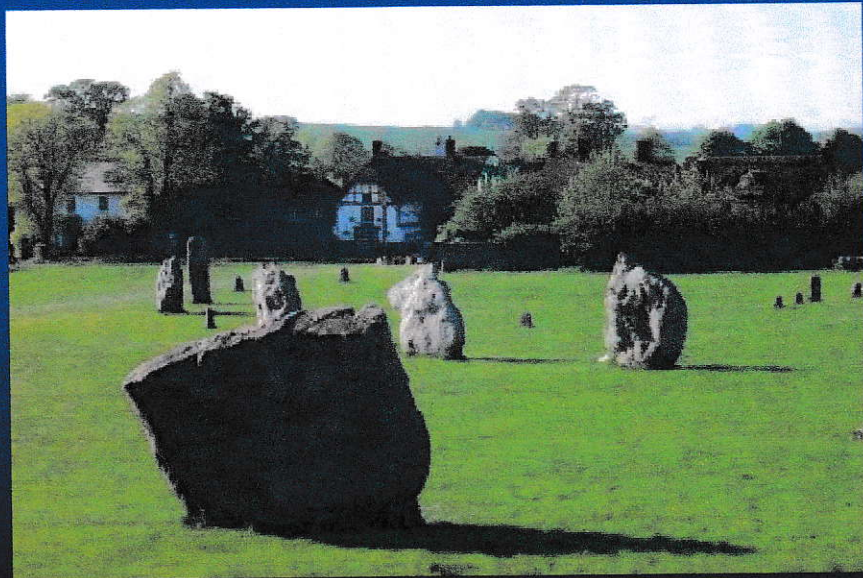
Period I - (c. 2950-2900 BC)  
Period II - (c. 2900-2400 BC)  
Period III - (c. 2550-1600 BC)



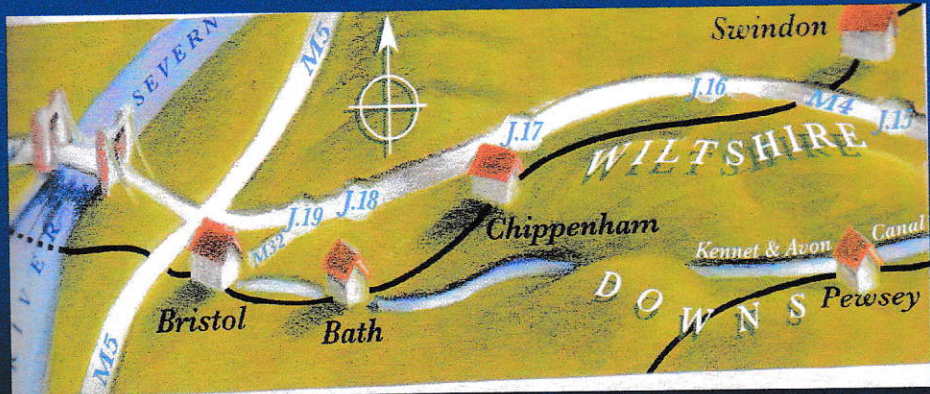
## Silbury Hill



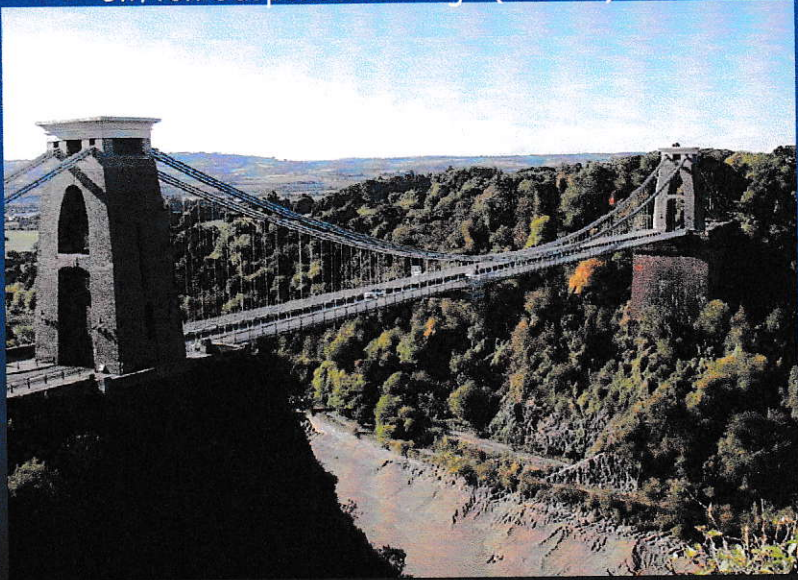
## Avebury Stone Circle



# Wiltshire Downs



Clifton Suspension Bridge (Bristol)



Bridge over River Severn: Second Crossing: 1996



Bridge over River Severn: Second Crossing: 1996



## Longleat House



## White Horse Inn, Woolstone



Typical Thatched Cottage, Uffington

