

THE
BROWNIE REGISTER

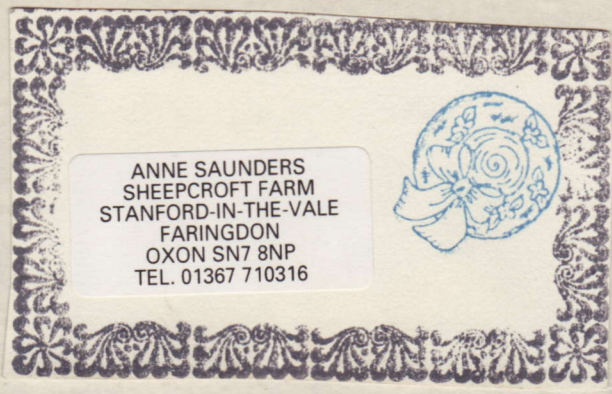


BROWN, SON & FERGUSON, Ltd., Publishers
52 to 58 DARNLEY STREET / - GLASGOW, S.1

8/7
f 7082

Shrivenham Brownie Pack.

Handwritten initials



HINTS FOR MARKING THE REGISTER.

A CAPITAL *P* placed under the letter denoting the Test passed and the form of date 10/3/48 will probably be found most convenient markings to use.

Arrange the names alphabetically, leaving intervals for the names of recruits.

The attendance register is usually marked *P*, denoting present; *E*, excused, or *A*, absent. See page 3.

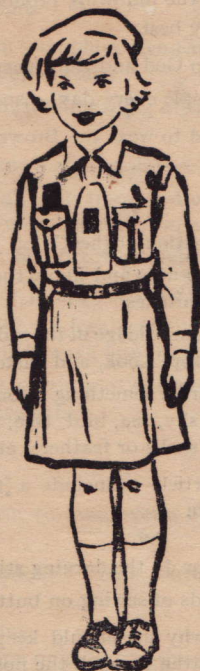
It is important that correct accounts should be kept and be properly audited at least once a year.

SHRIVENHAM
Heritage
CENTRE
Item No. 283
Prime Class '06113
Store: S3
Origin Anne Saunders
+ Brownies
Date Recvd 2000

OFFICIAL PUBLICATION

**Issued under Agreement with the Girl Guides Association
(Incorporated by Royal Charter) London**

**THE
BROWNIE REGISTER**



BROWN, SON & FERGUSON, Ltd., Publishers

52 to 58 DARNLEY STREET - GLASGOW, S.1

BROWNIES

A Brownie is a girl under 11 who is preparing to be a Guide. A recruit may not be admitted to the pack before the age of 7½. She is enrolled when she has passed the Enrolment Test and the Brown Owl considers she is ready for enrolment. Three and a half years should be the maximum time in the pack.

Enrolment Test.

1. Understand

The Brownie Promise

The Salute

The Good Turn

The Law.

The Smile

The Fairy Ring

The Motto.

2. Fold and tie her own tie.

3. Plait.

4. Wash up tea things.

Before being enrolled, the recruit should be told something about Brownies in other countries.

She will then make the following promise:

"I promise to do my best:—

1. To do my duty to God and the Queen.

2. To help other people every day—especially those at home."

She is then a Brownie and entitled to wear the Brownie badge.

Second Class.

I. Intelligence.

1. Know the composition of the Union Jack and the right way to fly it. ✓ L.S.

2. Tie the following knots and know their uses:—Reef knot, sheetbend, round turn and two half hitches.

3. Have a practical knowledge of the rules of the road. Take Brown Owl or Tawny Owl for a "Stop, Look, and Listen" walk. ✓ L.S.

4. Observe and describe something belonging to the outside world, chosen by herself. This may be sky, sea, bird, tree, flower, animal, etc., or make a collection of 6 flowers or shells or feathers, etc., and name them.

II. Handcraft.

1. Make a useful article to include a turned down hem sewn with a decorative tacking stitch. ✓ L.S.

or
Darn an article or do the darning stitch.

✓ 2. Show two methods of sewing on buttons and sew one button on to garment.

III. Health.

1. Know how and why she should keep her teeth clean, her nails cut and clean; and why breathe through the nose. ✓ L.S.

JW ✓ 2. Bowl a hoop or hop round a figure-of-eight. ✓ L.S.

JM ✓ 3. Skip twenty times without a break, turning the rope backwards.

JM ✓ 4. Throw a ball against a wall from a point ten feet away and catch it four times out of six.

or
Catch a ball thrown from a distance of six yards and return it to sender four times out of six.

IV. Service.

JM ✓ 1. Lay a table for dinner. ✓ L.S.

The second class badge, a golden bar, is granted on the recommendation of the Brown Owl, and is worn above the left hand breast pocket.

Intermediate (Golden Ladder Test) — This is an optional stage to First Class and may be tested by the Brownie's own Guider.

1. Know 15 letters of the alphabet in Semaphore and be able to send and receive simple words.
2. Set a compass and know eight points.
3. Knit a small useful article.
4. Fold clothes neatly.
5. Skip thirty times without a break, turning the rope backwards.
6. Throw a ball overarm, to land over a line seven yards away, within two side lines three yards apart.
7. Clean shoes.
8. Carry a message of at least twelve words in her head, for over five minutes, and deliver it correctly.

The Intermediate Test badge is granted on the recommendation of the Brown Owl and consists of a second golden bar, worn above the Second Class badge. This badge is replaced by the golden hand, when the First Class Test is passed.

First Class.—The candidate must hold the Golden Bar and show that she is really trying to keep the Brownie Promise.

I. Intelligence

1. Know the alphabet in semaphore, send and read three letters out of four correctly, send and read simple words.
2. Know and understand the meaning of the first and last verses of "God Save the Queen."
3. Set a compass and know eight points.
4. Have taken care of a plant, from seed or bulb, and describe to the tester something about the way it has grown, and how it was tended.
5. Using any slip knot, tie up and address a parcel for the post.

II. Handcraft

1. Knit a child's scarf or jumper or some other garment.
2. Lay and light a fire. If local conditions make this impossible the following may be substituted: wash and iron a Brownie tie.
3. Cook a milk pudding, porridge or equivalent dish, or potatoes, or other vegetable, or prepare a mixed salad.
4. Make tea.
5. Fold clothes neatly.

III. Health.

1. Throw a ball overarm to land over a line ten yards away, within two side lines three yards apart.
2. Skip thirty times without a break, turning the rope backwards, and skip two of following steps:
 - (a) Feet crossing
 - (b) Pointing toes forward.
 - (c) Turning rope quickly ("pepper".)
 - (d) Hopping with knee raising.

IV. Service.

1. Carry a message of at least twelve words in her head for over five minutes and deliver it correctly.
2. Bind up a cut finger and grazed knee.
3. Know what to do if clothing catches fire.
4. Clean shoes.

The First Class badge, a golden hand, is granted on the recommendation of a qualified Tester, and is worn over on the left breast above the Second Class badge.

1958

ATTENDANCES

NAME	SEPT		OCT		NOV			DEC			JAN		FEB		MA					
	23	30	7	14	21	28	11	18	25	2	9	16	13	20	27	3	10	24	3	
Linda STEWART	P	P	P	P	P	P	P	P	P	A	P	P	A	P	P	P	P	P	P	P
Louise STEWART	P	P	P	P	P	P	P	P	P	P	P	P	P	P	P	P	P	P	P	P
Kathleen COYLE	P	P	P	A	P	P	P	P	A	P	A	P	P	A	A	A	A	A	A	A
Julia FURTEK	P	P	P	P	P	A	P	P	P	P	A	P	A	A	A	A	A	A	A	A
Jacqueline HAYWARD	P	P	P	P	P	P	P	P	A	P	P	P	P	P	P	P	P	P	P	P
Susan MAWDITT	P	P	P	P	P	P	P	P	P	P	P	P	P	P	P	P	P	P	P	P
Angela PRIDHAM	P	P	P	P	P	P	A	P	P	P	P	P	P	P	P	A	P	P	P	P
Phillipa PRIDHAM	P	P	P	P	A	P	P	P	P	P	P	P	P	P	P	P	P	P	P	P
Catherine POOLEY	P	P	A	P	P	A	P	A	P	A	P	P	A	-	-	-	-	-	-	-
Judith RYDER	P	P	P	P	P	P	P	P	P	P	P	P	P	P	A	P	P	P	P	P
Mary YOXALL	P	A	A	A	A	L	E	F	T	A	A	-	-	-	-	-	-	-	-	-
Jacqueline WHITE	P	P	P	P	P	P	P	P	A	P	P	P	P	P	P	P	P	A	P	P
Jane Mycroft						P	A	P	P	P	P	P	P	P	A	P	A	P	P	P
Judith Benford													P	P	A	A	P	P	P	A
Roxie Robinson													P	P	P	P	P	P	P	P
Ann Belcher													P	P	P	P	P	A	P	P
Barbara Johnson													P	P	P	P	P	P	P	A
Linda Tappin																	P	P	A	A

12 11 10 10 10 10 10 11 9 10 10 12 13 14 11 12 13 12 13

SUBSCRIPTIONS

SEPT		OCT		NOVEMBER			DEC.			JAN			FEB		MAR		REMARKS								
23	30	7	14	21	28	4	11	18	25	2	9	16	23	30	6	13	20	27	3	10	24	3	10	DATE OF BIRTH	
3d	3d	3d	3	3	3	3	3	3	3	-	3	3	-	3	3	6	3	3	3	3	3	3	3	3	15. 11. 48.
3d	3d	3d	3	3	3	4	3	3	3	3	3	3	3	3	3	-	3	2	3	3	3	3	3	3	13. 12. 49.
3d	3d	3d	-	-	3	-	3	-	3	-	3	-	3	3	-	3	3	3	3	3	3	3	3	3	5. 2. 49.
3d	3d	3d	2	2	-	-	3	-	3	-	3	-	3	-	-	-	3	-	-	-	3	3	3	3	13. 9. 49.
3d	3d	3d	3	-	6	6	3	3	-	6	3	3	3	3	3	3	3	3	3	3	3	3	3	3	2. 11. 50.
3d	3d	3d	6	3	3	3	3	3	3	3	3	3	3	3	3	3	3	3	3	3	3	3	3	3	5. 2. 49.
3d	3d	3d	3	-	3	3	3	3	3	3	3	3	3	3	3	3	3	3	3	3	3	3	3	A	15. 7. 50.
3d	3d	-	2	3	2	-	3	-	3	2	2	-	-	-	-	-	-	-	-	-	-	-	-	25. 7. 50.	
-	3d	3d	3	3	3	3	3	3	3	3	3	3	3	3	3	3	3	3	3	3	3	3	3	3	4. 2. 51.
3d	-	-	-	-	-	1	-	-	-	-	-	-	-	-	-	-	-	-	-	-	-	-	-		
3d	3d	3d	3	2	-	3	6	-	3	3	3	3	3	3	6	3	-	4	3	3	3	3	3		

2/9 3/6 2/4 2/7 1/10 2/4 2/2 3/10 2/10 2/2 2/5 3/1 2/3 3/9 2/6 2/9 3/6 3/3 3/3

ATTENDANCES

NAME	MAR		APRIL		MAY			JUNE								
	17	24	21	28	5	12	19	26	2	9	15	B.R. 22	29	6	13	# 20
Linda STEWART	P	P	P	P	P	P	-	P	P	P	P	P	P	P	/	L E F T
Louise STEWART	P	P	P	P	P	P	-	P	P	P	P	P	P	P	/	L E F T
Kathleen COYLE	A	P	A	P	A	A		P			P	P	A	A	P	P
Julia FURTEK	P	P	P	P	P	P		P	P		P	P	P	A	P	P
Jacqueline HAYWARD	P	P	P	P	A	P		P	P	P	P	P	P	P	P	P
Susan MAWDITT	P	P	P	P	P	P		P	P	P	A	P	P	P	P	P
Angela PRIDHAM	P	P	P	P	P	P		P	P	P	P	P	P	P	P	P
Philippa PRIDHAM	P	P	P	P	P	P		P	P	P	P	P	P	P	P	P
Judith RYDER	P	P	P	P	A	P		A	L	E	F	T				
Jacqueline WHITE	P	A	P	P	P	P		P	A	P	P	P	P	P	P	P
Jane MYCROFT	P	P	P	P	P	P		P	P		P	P	A	P	P	P
Judith BENFORD	P	P	P	P	P	P		P	P	P	P	P	P	P	P	P
Roxé ROBINSON	P	A	P	P	P	P		P	P	A	P	P	P	P	P	P
Ann BELCHER	P	P	P	A	A	A		A	L	E	F	T				
Barbara JOHNSON	P	P	P	P	P	P		P	P	A	P	P	A	A	P	P
Linda TAPPIN	A	A	-	-	LEFT											
Sally East.					P	P		P	A	A	P	P	P	A	P	
Denise Furtek								P	P	P	P	P	P	P	P	

14 13 14 14 12 14 14 11 9 14 15 12 12 12

ATTENDANCES

NAME	SEPT.			OCT.				NOV.					DEC.			JAN			FEB	
	14	21	28	5	12	19	26	2	9	16	23	30	7	14	21	11	18	25	1	8
Kathleen COYLE	P	A	P	A	P	P	-	P	P	P	A	P	A	P	-	P	P	P	P	P
Julia FURTEK	P	P	A	P	P	P	-	P	P	P	P	A	A	P	-	P	A	P	P	P
Jacqueline HAYWARD	P	P	P	A	P	P	-	P	P	P	P	P	P	P	-	A	P	P	P	P
Susan MAWDITT	P	P	P	P	P	P	-	P	P	P	P	P	P	P	-	P	P	P	P	P
Angela PRIDHAM	P	P	P	P	P	P	-	P	P	P	A	P	P	P	-	P	P	P	P	P
Philippa PRIDHAM	P	P	P	P	P	P	-	P	P	P	P	P	P	P	-	P	P	P	P	P
Jacqueline WHITE	A	P	P	P	P	P	-	P	P	P	P	P	P	P	-	P	P	P	P	P
Jane MYCROFT	L	L																		
Judith BENFORD	P	P	P	P	P	P	-	P	P	P	P	P	P	P	-	P	P	P	P	P
ROXE ROBINSON	P	A	P	P	A	P	-	P	A	P	P	P	P	P	-	P	P	P	P	P
Barbara JOHNSON	P	P	A	A	A	P	-	P	A	P	P	A	P	P	-	P	P	P	P	A
Sally EAST	A	P	P	P	P	P	-	P	P	P	P	P	P	P	-	P	P	P	P	P
Denise FURTEK	P	P	P	P	P	P	-	P	P	A	P	P	P	P	-	A	P	P	A	P
Pat Goodall										P	P	P	P	P	-	P	A	P	P	P
Susan Merry											P	P	P	P	-	P	P	P	A	P
Joy Griffiths																P	P	P	P	P
Lyn Hughes																P	P	P	A	P
Jane Hughes																		P	P	P
Susan Jenner																		P	P	P
Jaret Harvey																				

10 10 10 9 10 12 - 12 10 12 12 12 12 14 14 14 14 18 15 17

SUBSCRIPTIONS

Sept.		Oct.				Nov.				Dec.				JAN.			FEB		REMARKS
4	21	28	5	12	19	26	2	9	16	23	30	7	14	11	18	25	1	8	
	A	3	A	3	3	-	3	3	3	A	3	A	3	3	-	6	3	3	FAIRY 5.2.49
	3	A	2	3	3	-	-	-	6	3	A	A	-	3	A	3	2	3	FAIRY 13.9.49
	3	3	A	3	3	-	3	3	3	3	3	3	3	A	3	3	3	3	ELF 27.5.49
	3	3	3	3	3	-	3	3	3	3	3	3	3	3	3	3	3	3	FAIRY 2.11.50
	3	6	3	3	3	-	3	3	3	A	3	3	-	3	3	3	3	3	FAIRY - SIXER 5.2.49
	3	3	3	3	3	-	3	3	3	3	3	3	-	3	3	3	3	3	ELF 15.7.50
A	3	3	3	3	3	-	3	3	3	3	3	3	3	-	-	6	3	6	ELF 24.6.50
LEFT																			
	3	3	3	3	3	-	3	3	3	3	3	3	3	3	3	3	3	3	GNOME - SIXER 16.6.51
	A	3	3	A	3	-	3	A	3	3	3	3	3	3	3	6	3	6	GNOME 18.8.51
	3	A	A	A	3	-	3	A	3	3	A	3	6	6	3	3	3	A	GNOME 1.9.51
	3	3	3	6	3	-	3	-	6	3	3	3	6	3	-	3	2	6	GNOME 10.12.49
	3	-	3	3	3	-	-	-	A	3	3	-	-	A	-	3	A	3	ELF 3.1.52
									3	3	3	3	3	3	A	3	3	3	GNOME 7.3.49
										3	3	3	3	3	6	3	A	6	ELF 26.5.49
														6	3	3	3	3	FAIRY 5.2.52
														3	3	3	A	3	ELF 20.8.52
																2	3	6	FAIRY 24.12.51
																6	-	6	GNOME

6 2/6 2/6 2/2 2/9 3/0 - 2/6 1/9 3/6 3/- 3/- 2/9 3/- 3/9 2/9 5/5 3/4 5/9

ATTENDANCES

NAME	FEB.		MARCH			APR.			MAY			JUNE			JULY				
	15	29	7	14	21	28	4	2	9	16	23	30	13	20	27	4	11	18	
Kathleen COYLE	P	A	P	A	A	A	A	LEFT											
Julia FURTEK	A	A	P	A	A	A	A	LEFT											
Jacqueline HAYWARD	P	A	P	A	A	A	A	LEFT											
Susan MAWDITT	P	P	P	P	P	P	P	P	P	P	P	P	P	P	P	A	P	P	
Angela PRIDHAM	P	P	P	P	P	P	P	P	P	P	P	A	P	P	P	P	P	A	
Philippa PRIDHAM	P	P	P	P	P	P	A	A	P	P	P	P	P	P	P	P	P	P	
Jacqueline WHITE	P	P	P	P	P	P	P	A	A	P	P	P	P	P	P	P	P	P	
Judith BENFORD	A	P	P	P	P	P	P	P	P	P	P	P	P	P	P	P	A	P	
Roxe ROBINSON	P	P	A	P	P	P	P	P	P	A	P	P	P	P	P	P	P	P	
Barbara JOHNSON	A	P	P	P	P	P	A	A	A	A	P	P	P	A	A	A	P	P	
Sally EAST	P	P	P	P	P	P	P	P	P	P	A	LEFT							
Derise FURTEK	P	A	A	A	A	A	A	LEFT											
Pat GOODALL	P	LEFT																	
Susan MERRY	A	P	A	P	A	A	A	A	LEFT										
Joy GRIFFITHS	P	P	P	A	P	P	P	P	P	P	P	P	P	P	P	P	P	A	
Lyn HUGHES	P	P	P	P	P	P	P	P	P	P	P	P	P	P	P	P	P	A	
Jane HUGHES	P	P	P	P	P	P	P	P	P	A	P	P	P	P	P	P	P	P	
Susan JENNER	P	P	P	P	P	P	P	P	P	P	P	P	A	P	P	P	P	P	
Lisa KRUSZELYNCKY				P	P	P	P	P	P	P	P	P	P	P	P	P	P	A	
Nicola COTTON						P	P	A	A	A	A	P	A	LEFT					
Ann HIGGINS												P	P	P	P	A	A	A	
Joan SCULLY												P	A	A	P	P	P	P	
Sheena HITCHCOCK													P	P	P	P	P	A	
Christine BANNAN													P	P	A	P	P	A	
Roberta WILDES														P	P	P	P	P	

14 13 14 13 13 14 11 10 10 11 14 13 14 17 15 14 14 11

SUBSCRIPTIONS

REMARKS

FEB.		MARCH				APR.		MAY				JUNE			JULY					
15	29	7	14	21	28	4	2	9	16	23	30	13	20	27	4	11	18			
3	A	3	A	A	A	A													FAIRY	5.2.49
A	A	6	A	A	A	A													FAIRY	13.9.49
3	A	3	A	A	A	A													ELF-SIXER.	27.5.49
3	3	3	3	3	3	3	3	3	3	3	3	3	3	3	A	3	3		FAIRY	2.11.50
3	3	3	3	3	3	3	3	3	3	3	A	3	3	3	3	3	A		FAIRY-SIXER	5.2.49
3	3	3	3	3	3	A	A	3	3	3	3	3	3	3	3	3	6		ELF	15.7.50
3	6	6	3	3	-	3	A	A	3	3	3	3	3	3	3	3	3		ELF-SIXER	24.6.50
A	3	3	3	3	3	3	3	3	3	3	3	3	3	3	3	A	3		GNOME-SIXER	16.6.51
3	3	A	3	3	3	3	3	3	A	3	3	3	3	3	3	3	3		GNOME-	18.8.51
A	3	3	3	3	3	A	A	A	A	3	3	3	3	A	A	3	3		GNOME	1.9.51
6	3	3	-	3	6	3	-	6	3	A									GNOME	10.12.49
2	A	A	A	A	A	A													ELF	3.1.52
3																			GNOME	7.3.49
A	3	A	3	A	A	A													ELF	26.3.49
3	3	3	A	3	3	6	6	3	3	3	3	3	3	3	3	3	A		FAIRY	5.2.52
3	3	3	3	3	3	3	3	3	3	3	-	6	3	3	3	A	3		ELF	20.8.52
3	3	3	3	3	3	3	3	3	A	3	3	3	3	3	3	3	3		FAIRY	24.12.51
3	3	3	3	3	3	A	6	3	3	3	3	A	3	3	3	3	3		GNOME	28.5.52
			-	6	3	3	3	-	6	3	3	3	3	-	3	3	A		GNOME ELF	12.3.50
					-	3	A	A	A	A	3	A							FAIRY	30.11.51
										-	3	3	3	3	A	A	A		ELF	26.7.50
										-	A	A	3	3	3	3	3		FAIRY	14.3.52
												3	3	3	3	3	A		FAIRY	21.6.52
												-	6	A	6	1	A		GNOME	.53
													3	3	3	3	3		GNOME	22.10.52

3/83/64-2/93/63/33/-2/92/92/93/-3-2/64/63/64-3/43/-

ATTENDANCES

NAME	SEPT.			OCT.				NOV.				DEC.			JAN.				
	12	19	26	3	10	17	24	31	7	14	21	28	5	12	19	9	16	23	30
Susan MAWDITT	P	P	P	P	P	P	P	P	P	P	P	P	P	P	P	P	P	P	P
Philippa PRIDHAM	P	P	P	P	P	P	P	P	P	P	P	P	P	P	P	A	A	P	P
Jacqueline WHITE	P	P	A	A	A	A	P	P	P	P	P	P	P	P	P	P	P	P	P
Judith BENFORD	P	P	P	P	P	P	P	P	P	P	P	P	A	P	P	P	P	P	P
Roxe ROBINSON	P	P	P	P	P	P	P	P	P	P	P	P	P	P	P	P	P	P	P
Barbara JOHNSON	P	P	A	P	P	P	P	P	A	P	P	P	P	P	P	A	A	P	A
Joy GRIFFITHS	LEFT																		
Lyn HUGHES	LEFT																		
Jane HUGHES	P	P	P	P	P	P	P	A	P	P	P	P	P	P	P	LEFT			
Susan JENNER	P	A	P	P	P	P	P	P	P	P	P	P	P	P	P	P	P	P	P
Lisa KRUSZELYNKY	P	A	P	P	P	P	A	P	P	P	A	P	P	P	P	-	P	P	P
Anr HIGGINS	P	P	P	P	A	A	P	P	P	P	A	P	P	P	P	-	P	A	P
Joan SCULLY	P	P	P	P	P	P	P	P	P	P	P	P	P	P	P	-	P	P	A
Sheena HITCHCOCK	P	P	P	P	P	P	P	A	P	P	P	P	P	P	P	-	A	P	A
Roberta WILDES	P	P	P	P	P	P	P	P	P	P	A	P	P	P	P	P	P	P	P
Helena PRESCOTT	P	P	P	P	P	A	P	A	P	A	P	P	A	P	P	-	A	A	P
Janet HARVEY	P	P	P	P	P	P	P	P	P	P	P	P	P	P	P	P	P	P	A
Kathryn GEBBIE	P	P	P	P	P	P	P	P	P	P	P	P	A	P	-	P	P	P	P
Linda SHEPPARD		P	P	P	P	P	P	P	P	P	P	P	P	P	P	P	P	P	P
LESLEY BRAY								P	P	P	P	P	P	P	-	P	P	P	P
Jan ROBERTSON																	P	P	P
Marian HARVEY																	P	P	P

15 14 15 16 16 14 16 15 17 17 15 18 16 17 18 4 15 17 15

ATTENDANCES

NAME	FEB.				MARCH				APR				MAY				JUNE				JUL
	6	13	20	27	6	13	20	27	24	1	8	15	22	29	5	12	19	26	3		
Susan MAWDITT	P	P	P	P	P	P	P	P	P	P	P	-	P	P	P	P	P	P	P		
Philippa PRIDHAM	P	P	A	P	P	P	A	P	P	P	P	-	P	P	P	P	P	P	P		
Jacqueline WHITE	P	P	B	A	P	P	P	A	P	A	P	-	P	P	A	P	LEFT	-			
Judith BENFORD	P	P	A	P	P	P	P	P	P	P	P	-	P	P	P	P	P	P	P		
Roxe ROBINSON	A	P	A	P	P	A	P	P	A	P	P	-	P	P	P	P	P	P	P		
Barbara JOHNSON	P	P	B	P	P	P	A	P	P	P	P	-	P	P	P	P	P	P	P		
Susan JENNER	A	P	B	P	P	P	A	P	P	P	P	-	A	P	A	P	P	P	P		
Lisa KRUSZELYNCKY	P	P	A	A	P	P	P	A	P	P	P	-	P	P	A	P	P	P	P		
Ann HIGGINS	P	A	B	A	A	A	P	A	P	P	P	-	P	P	A	A	P	P	P		
Joan SCULLY	P	A	B	A	A	A	A	P	P	P	P	-	P	P	A	P	P	P	P		
Sheena HITCHCOCK	A	P	B	P	P	P	P	P	P	P	P	-	P	P	P	P	P	P	P		
Roberta WILDES	P	P	B	P	A	P	A	P	P	P	P	-	A	P	P	P	P	P	P		
Helena PRESCOTT	P	P	P	P	P	P	P	P	P	P	P	-	P	P	P	P	P	P	P		
Janet HARVEY	P	A	P	P	A	P	P	P	P	P	A	P	-	P	P	A	P	P	P		
Kathryn GEBBIE	A	P	A	P	P	P	P	P	P	P	P	-	P	P	P	P	P	P	P		
Linda SHEPPARD	A	P	P	P	P	P	A	A	P	P	P	-	P	P	A	A	P	P	P		
Lesley BRAY	A	P	A	P	P	P	P	P	P	P	P	-	P	P	P	P	P	P	P		
Jan ROBERTSON	P	P	P	P	P	P	P	P	P	P	P	-	P	P	P	P	P	P	P		
Marion HARVEY	P	P	P	A	P	A	P	P	A	A	A	-	P	P	A	A	P	P	P		
Sheena BROWN	P	P	P	P	P	P	P	P	P	P	P	-	P	P	P	P	P	P	P		
Lorraine CLARK								P	P	P	P	-	P	P	A	A	P	P	P		
Caroline CAIGER									P	P	P	-	P	P	P	P	P	A	P		
Jill BRAY										P	P	-	P	P	P	P	P	A	P		
Margaret SMITH										P	P	-	P	P	P	P	P	P	P		
Susan DAVIES										P	P	-	P	P	P	P	P	P	P		
Pamela PONSFORD										P	P	-	P	P	P	A	A	A	-		
Lynn KEEN										P	P	-	P	P	P	P	P	P	P		

13 17 14 15 16 16 15 18 18 20 24 25 - 27 18 23 25 24 2

SUBSCRIPTIONS

SUBSCRIPTIONS															REMARKS						
FEB.				MARCH					MAY					JUNE				JULY			
6	13	20	27	6	13	20	27	4	1	8	15	22	29	5	12	19	26	3	10		
3	3	3	3	3	3	3	3	3	3	3	3	-	3	3	3	3	3	3	3	FAIRY-SIXER	2.11.50
3	3	A	3	3	3	3	A	3	3	3	3	-	3	3	3	3	3	3	3	ELF - SIXER	15.7.50
3	3	3	A	3	3	1 1/2	3	A	-	A	3	-	2	3	A	3	LEFT	-	-	ELF - SIXER	24.6.50
3	3	A	3	3	3	3	-	3	3	3	3	-	3	6	3	3	3	3	3	GNOME-SIXER	16.6.51
A	3	A	3	3	A	3	3	A	3	3	3	-	3	3	3	3	3	3	3	GNOME	18.8.51
3	3	3	3	3	3	3	A	3	3	3	3	-	6	3	3	3	3	3	3	GNOME PIXIE GNOME-SIXER	1.9.51
A	3	3	3	3	3	A	3	3	3	3	-	-	A	3	A	3	3	3	3	GNOME PIXIE	28.5.52
3	3	A	A	3	-	6	3	A	3	-	6	-	3	3	A	A	3	3	3	GNOME PIXIE	12.3.50
3	A	3	A	A	A	3	A	3	3	3	3	-	3	3	A	3	3	3	3	ELF	26.7.50
3	A	3	A	A	A	A	3	3	3	3	3	-	3	3	A	3	3	3	3	FAIRY PIXIE	14.3.52
A	3	3	3	3	3	3	3	3	3	3	3	-	3	-	6	3	3	3	3	FAIRY	21.6.52
3	3	3	3	A	3	A	3	3	3	-	A	-	A	3	3	3	3	3	3	GNOME	22.10.52
3	3	3	3	3	-	6	3	3	3	3	3	-	-	3	3	3	3	3	3	FAIRY	25.5.52
3	A	3	3	A	-	3	3	3	3	A	-	-	3	3	A	3	-	3	3	ELF	21.3.53
A	3	A	6	3	3	3	3	3	3	3	3	-	3	3	3	3	3	3	3	FAIRY	28.3.52
A	3	3	3	3	3	A	A	3	3	3	3	-	3	3	A	A	3	3	3	GNOME	11.12.52
A	6	A	3	3	3	3	3	3	3	3	3	-	3	3	3	3	3	3	3	ELF	15.6.52
6	6	3	3	3	3	3	3	3	3	3	3	-	3	3	3	3	3	3	3	FAIRY	23.1.52
3	3	3	A	3	A	3	6	A	A	A	A	-	3	3	A	A	3	3	3	GNOME	10.1.54
3	3	3	3	3	3	3	3	3	3	3	3	-	3	-	3	3	3	3	3	ELF	22.3.52
							3	3	3	3	3	-	3	3	A	A	3	3	3	FAIRY	8.53
							3	3	3	3	3	-	3	3	3	3	3	A	A	ELF	10.11.53
									3	3	3	-	3	3	3	3	3	3	3	FAIRY FAIRY	19.4.54
									3	2	3	-	3	5	-	3	3	3	3	GNOME	1.10.53
									3	3	3	-	3	3	3	3	3	3	3	PIXIE	17.6.53
									-	-	3	-	-	3	-	A	A	A	LEFT	PIXIE	30.11.52
									-	3	3	-	3	3	-	6	3	3	3	GNOME	21.5.53

3/3 5/0 3/6 4-4-3/3 4/1 4/6 4/6 5/0 5/2 6/1 - 5/11 6/8 4-5/9 6/6-6/6

ATTENDANCES

NAME	JULY		SEPT.				OCT.				NOV.			DEC.		JAN.				
	17	24	11	18	25	2	9	16	23	30	6	13	20	27	4	11	18	15	22	
Susan MAWDITT	P	P	LEFT																	
Philippa PRIDHAM	P	P	LEFT																	
Judith BENFORD	P	P	P	P	A	P	P	P	P	P	P	P	P	P	A			P	P	
Roxe ROBINSON	P	P	P	P	A	P	P	P	P	P	P	A	P	P	A	P		P	P	
Barbara JOHNSON	A	P	P	P	A	P	P	P	P	P	P	A	P	P	P			P	P	
Susan JENNER	P	P	P	P	P	A	A	LEFT												
Wsa KRUSZELYNKA	P	P	LEFT																	
Ann HIGGINS	P	P	LEFT																	
Joan SCULLY	P	P	P	P	P	P	A	P	A	P	A	A	P	P	P	P		A	P	
Sheena HITCHCOCK	P	P	P	P	P	P	P	P	P	A	P	A	P	P	P	P		P	P	
Roberta WILDES	P	A	P	P	P	P	P	P	A	A	A	P	P	P	P	A		A	P	
Helena PRESCOTT	P	P	P	P	P	A	P	P	A	A	P	P	P	A	P	P		P	P	
Janet HARVEY	P	P	P	P	P	P	P	P	P	A	P	P	A	A	P	P		A	P	
Kathryn GEBBIE	P	P	P	P	P	P	P	P	P	P	P	P	P	A	P	P		P	P	
Linda SHEPPARD	P	P	P	P	P	P	A	P	P	A	A	A	P	P	P	A		P	P	
Lesley BRAY	P	A	P	P	P	P	P	P	P	P	A	P	P	P	P	A		P	P	
Jane ROBERTSON	P	P	P	P	P	P	A	P	P	P	P	P	P	P	P	P		P	P	
Marion HARVEY	P	P	A	A	A	LEFT														
Sheena BROWN	P	P	P	A	P	P	P	P	P	A	P	P	P	P	P	A		P	P	
Lorraine CLARKE	P	P	P	P	P	P	P	A	P	A	P	P	P	A	P	P		P	A	
Cardine CAIGER	P	P	P	P	P	P	A	P	P	P	P	A	P	A	P	LEFT				
Jill BRAY	P	A	P	P	P	P	P	P	P	P	P	P	P	P	P	A		A	A	
Marquet SMITH	P	A	P	P	P	P	P	A	P	A	A	P	P	A	P	P		P	P	
Susan DAVIES	P	P	P	P	P	P	P	P	P	LEFT										
Lynn KEEN	P	P	A	A	P	P	P	P	P	A	A	P	P	P	R	A		P	A	
Eleanor TASKER			P	P	P	P	P	P	P	P	A	A	P	P	P			P	P	
Felicity CLARKE			P	P	P	P	P	P	P	P	A	P	P	P	P			P	P	
Eluned JONES			P	P	P	P	P	P	P	P	P	P	P	P	P			P	P	
Gillian HORNER			P	P	A	P	P	P	P	A	A	P	P	A	A	P		A	P	
Jaye LUKER						P	P	P	P	A	P	P	A	P	P			A	A	
	24	21	23	22	20	23	20	23	21	23	21	13	16	16	19	16	24	18	16	18

SUBSCRIPTIONS METTA

JULY		SEPT			OCT.					NOV.			DEC			JAN			REMARKS		
17	24	11	18	25	2	9	16	23	30	6	13	20	27	4	11	18	15	22		29	
3	3	LEFT																			FAIRY - SIXER 2.11.50
3	3	LEFT																			ELF - SIXER 15.7.50
3	3	3	3	A	3	3	3	3	3	3	3	3	3	-	A		3	3	-		GNOME - SIXER 16.6.51
3	3	3	3	A	3	3	3	3	3	3	A	3	3	A	3		3	3	3		GNOME - SIXER 18.8.51
A	3	6	3	A	3	3	3	3	3	3	A	3	3	3			3	3	3		PIXIE - SIXER 1.9.51
3	3	3	3	3	A	A	LEFT														PIXIE 28.5.52
3	- LEFT																				PIXIE 12.3.50
3	- LEFT																				ELF 26.7.50
3	-	3	3	3	3	A	3	A	3	A	A	6	3	3	3		A	3	A		PIXIE 14.3.52
3	3	3	3	3	3	3	3	3	A	3	A	3	6	3	6		3	3	3		FAIRY 21.6.52
3	A	-	-	3	3	3	3	A	A	A	B	3	3	3	A		A	3	3		GNOME 22.10.52
3	-	3	3	-	A	3	3	A	A	3	3	3	A	3	A		3	3	A		FAIRY 25.5.53
-	3	3	3	-	3	3	3	3	A	3	3	A	A	-	3		A	3	A		ELF 21.3.53
3	3	3	3	3	3	3	3	3	3	3	3	3	3	A	3	3	3	3	3		FAIRY - SIXER 28.3.52
3	-	3	3	3	3	A	3	3	A	A	A	3	3	3	A		3	3	A		GNOME 11.12.52
3	A	3	3	3	3	3	3	3	3	A	3	-	6	3	A		3	3	3		ELF 15.6.52
3	3	3	3	3	3	A	3	3	3	3	3	3	-	3	1		3	3	3		GNOME FAIRY 23.1.52
3	3	A	A	A	LEFT																GNOME 10.1.54
3	3	3	A	3	3	3	-	6	A	-	3	3	3	3	A		3	3	3		ELF 22.3.52
3	3	3	3	3	3	3	A	3	A	3	3	3	A	3	3		3	A	3		FAIRY 8.8.53
3	3	3	3	3	3	A	3	3	3	3	A	3	A	3	A						ELF 10.11.53
3	A	3	3	3	3	3	3	3	3	3	3	-	6	3	A		A	-	3		FAIRY 17.4.54
3	A	3	3	3	3	3	3	3	A	A	3	3	A	3	3		3	3	A		GNOME 1.10.53
3	3	3	3	3	3	3	3	-	LEFT.												PIXIE 17.6.53
3	3	A	A	3	3	2	3	3	A	A	3	6	3	3	A		3	A	3	1/2	GNOME 21.5.53
	3	3	3	3	3	3	3	3	3	3	A	A	6	3	3		3	-	6		ELF 6.2.54
	-	3	3	3	3	3	3	3	3	3	A	3	3	-	3		3	3	3		FAIRY 30.10.53
	3	3	3	3	3	3	3	3	A	3	3	3	3	3	3		-	3	3		PIXIE 13.7.54
	-	3	A	3	3	3	3	3	A	3	3	A	A	3			A	3	3		PIXIE 10.7.54
				3	3	3	3	3	A	3	3	A	3	3			A	A	A		GNOME 29.1.52

5/9 4/3 5/3 5/3 4/6 6/6 4/11 5/6 5/3 3/1 6/6 4/6 3/9 4/11 3/9 4/3 4/11 3/9

ATTENDANCES

NAME	OCT												NOV				DEC.			JAN.	
	2	9	16	23	30	6	13	20	27	4	11	18	15	22	29						
GOODMAN Susan	² P	⁹ P	¹⁶ P	²³ P	³⁰ P	⁶ P	¹³ P	²⁰ A	²⁷ A	⁴ P	¹¹ P	¹⁸ -	¹⁵ A	²² A	²⁹ A						
LOWE Claire		²⁰ P	²⁷ P	³ P	¹⁰ P	¹⁷ P	²⁴ P	³¹ P	⁷ P	¹⁴ P	²¹ P	²⁸ P	⁵ P	¹² P	¹⁹ P						
CHAMPAGNE Monique		²⁰ P	²⁷ P	³ P	¹⁰ P	¹⁷ A	²⁴ P	³¹ P	⁷ P	¹⁴ P	²¹ P	²⁸ P	⁵ P	¹² A	¹⁹ P						
Allen Linda													⁵ P	¹² P	¹⁹ P						
Cuss Glennis													⁵ P	¹² P	¹⁹ P						
PHILIPS Alison														⁵ P	¹² A						
HARVEY Carén														⁵ P	¹² P						

24 23 26 24 15 13 19 21 18 23 18 20 23 2

SUBSCRIPTIONS

	OCT.			NOV.				DEC.			JAN.		REMARKS				
	2	9	16	23	30	6	13	20	27	4	11	18		15	22	29	
7	6/3	9/3	16/3	23/3	30/3	6/3	13/3	20/A	27/A	4/3	11/3	18/-	15/A	22/A	29/A	PIXIE FAIRY	30/4/52
	3	3	3	3	3	3	3	3	3	6	3	-	3	3	3	ELF	11/8/53
	-	3	3	3	A	3	3	3	3	3	3	-	3	A	3	PIXIE	24/12/52
													3	-	6	"	9/8/54
													3	3	3	GNOME	11/8/54
													3	A		FAIRY	14/8/53
													3	3		ELF	10/9/54

6/3 5/5 6/3 6/1 - 3/9 4/4 - 4/9 5/6 5/3 5/9 4/6 4/9 5/6 5/8

ATTENDANCES

NAME

FEB.			MARCH				APR.		MAY				JUNE			JULY		
5	12	19	5	12	19	26	3	9	7	14	21	28	4	18	25	2	9	16

Jean	SCULLY	P	P	P	P	A	P	P	P	P	P	P	P	P	P	P	P	P	P	
Sheena	HITCHCOCK	P	A	P	P	P	P	P	P	P	P	P	P	P	P	P	P	P	P	
Roberta	WILDES	P	P	P	A	P	P	P	A	P	P	P	P	A	P	A	P	P	P	
Helena	PRESCOTT	P	P	P	P	P	P	P	P	P	P	P	P	P	P	P	P	P	P	
Janet	HARVEY	A	P	P	P	P	P	P	P	P	P	P	P	P	P	P	P	P	P	
Kathryn	GEBBIE	A	P	P	P	A	A	A	P	P	P	P	P	P	P	P	P	P	P	
Linda	SHEPPARD	P	P	P	A	P	P	A	A	A	P	P	P	P	P	P	P	P	A	
Lesley	BRAY	P	A	P	P	P	P	P	P	P	P	P	P	P	P	P	P	P	P	
Jan	ROBERTSON	P	P	P	P	P	P	P	P	P	P	P	P	P	P	P	P	P	P	
Sheena	BROWN	P	A	A	A	A	P	P	P	P	P	P	P	P	P	P	P	P	P	
Lorraine	CLARKE	A	A	P	P	P	P	A	P	P	A	P	P	P	P	A	P	P	A	
Jill	BRAY	A	A	A	A	LEFT														
Margaret	SMITH	P	P	P	P	P	P	P	P	P	P	P	P	P	P	P	P	P	P	
Lynn	KEEN	A	P	P	P	P	P	P	P	P	P	P	P	P	P	A	P	P	P	
Eleanor	TASKER	P	A	P	P	P	P	P	P	P	P	A	P	P	P	P	P	A	A	
Felicity	CLARKE	P	P	P	P	P	P	P	P	P	P	P	P	P	P	P	P	P	P	
Elned	JONES	P	A	P	A	A	P	P	P	P	P	P	P	P	P	P	P	P	P	
Gillian	HORNER	P	P	P	A	P	P	P	Joy BAIRD LEFT		P	P	P	P	P	P	P	P	P	
Janet	LUKER	LEFT																		
Susan	GOODMAN	LEFT																		
Clare	LOWE	P	P	P	P	P	P	P	P	A	P	P	P	P	P	P	P	P	P	
Monique	CHAMPAGNE	P	A	P	P	A	A	P	A	A	P	P	P	P	A	P	A	A	P	
Linda	ALLEN	P	P	P	P	P	P	P	P	P	P	A	P	P	P	A	P	P	P	
Glennis	CUSS	P	P	P	P	P	P	P	P	P	P	P	P	P	P	P	P	P	P	
Alison	PHILIPS	P	P	P	P	P	P	P	P	P	P	P	P	P	P	P	P	P	P	
Caren	HARVEY	P	P	P	P	P	P	P	P	P	P	P	P	A	A	A	P	P	P	
Judith	BENFORD	P	P	A	P	P	P	P	Susan JOHNSON LEFT		P	P	P	P	P	P	P	P	P	
Barbara	JOHNSON	P	P	P	P	P	P	P	Helen JOHNSON LEFT		P	P	P	P	P	P	P	P	P	
Wendy	CLARKE	LEFT																		
Susan	LOWE	LEFT																		
Heather	SMITH	LEFT																		
Carol	DANE	LEFT																		
		20	18	23	20	20	23	24	20	20	27	26	28	29	28	29	26	28	28	26

SUBSCRIPTIONS

REMARKS

FEB.		MARCH			APR.		MAY			JUNE			JULY			REMARKS		
12	19	5	12	19	26	3	9	7	14	21	28	4	18	25	2		9	16
3	3	3	A	3	3	3	3	3	3	3	3	3	3	3	3	3	3	PIXIE 14.3.52
A	-	-	9	3	3	-	6	6	1	3	3	-	-	9	3	3	1	PIXIE-SIXER 21.6.52
-	-	A	3	3	3	A	3	3	A	3	3	A	6	A	3	3	6	GNOME 22.10.52
3	3	3	3	3	3	3	3	3	3	3	3	3	3	3	3	3	3	FAIRY 25.5.53
3	3	3	3	3	3	3	3	3	3	3	3	3	3	3	3	3	3	ELF 21.3.53
3	3	3	A	A	A	6	3	3	3	3	3	3	3	3	3	3	3	FAIRY-SIXER 28.3.52
3	3	A	3	3	A	A	A	3	3	3	3	3	3	3	3	3	A	GNOME 11.12.52
A	3	3	3	3	3	3	3	3	3	3	3	3	3	3	3	3	3	ELF-SIXER 15.6.52
3	3	3	3	3	6	6	3	3	3	3	3	3	3	3	3	3	3	GNOME-SIXER 23.1.52
A	A	A	A	3	3	3	-	3	3	3	3	3	1	1	9	3	3	ELF 22.3.52
A	3	3	3	3	A	3	3	A	3	3	3	3	3	A	3	3	A	FAIRY 8.8.53
A	A	A	A	LEFT														FAIRY 19.4.54
3	3	-	3	3	3	3	3	3	3	6	3	3	3	3	3	3	3	GNOME 1.10.53
3	3	3	3	3	3	3	3	3	3	6	3	3	A	6	3	3	3	GNOME 21.5.53
A	3	3	3	3	3	3	3	3	A	3	3	3	3	3	A	A	3	ELF 6.2.54
3	3	3	3	3	3	3	-	3	3	3	3	6	3	3	1	3	3	FAIRY 30.10.53
A	3	A	A	9	3	3	3	3	3	1	6	3	3	3	3	3	3	PIXIE 13.7.54
3	3	3	A	3	3	LEFT			3	3	3	3	3	3	3	3	3	PIXIE 10.2.53
									3	3	3	3	3	3	A	3	A	PIXIE 10.7.54
									3	3	3	3	3	3	3	3	3	GNOME 10.4.54
									3	3	3	3	3	3	3	3	3	GNOME 29.1.52
																		PIXIE 30.4.52
3	3	3	6	3	6	3	6	A	3	3	3	3	3	3	3	3	3	ELF 11.8.53
A	3	3	A	A	3	A	A	3	3	3	3	A	3	A	A	3	3	PIXIE 24.12.52
3	3	3	3	3	3	3	3	A	3	3	3	3	3	A	3	-	3	PIXIE 9.8.54
3	3	3	3	3	3	3	3	3	3	3	3	3	3	3	3	3	3	GNOME 19.8.54
3	3	3	3	3	3	3	3	3	3	3	3	3	3	3	3	3	3	FAIRY 14.8.53
3	3	3	3	3	3	3	3	3	3	3	3	3	3	3	3	3	3	ELF 10.9.54
3	A	3	3	3	LEFT			3	3	3	3	3	3	3	3	3	3	PIXIE 20.3.55
3	3	6	3	3	3	3	3	3	3	3	3	3	3	3	3	3	3	FAIRY 20.3.55
									3	3	3	3	3	3	3	3	3	FAIRY 9.2.55
									3	3	3	3	3	3	3	3	3	ELF 27.3.55
									3	3	3	3	3	3	3	3	3	GNOME 21.4.55
									3	3	3	3	3	3	3	3	3	PIXIE 26.12.52

4- 5- 5/35/56/95/35/64/67/38/36/8/37/37/1-49 7/7 6/6 6/9

ATTENDANCES

NAME	SEPT.			OCT.			NOV.			DEC.			JAN			FEB		
	10	17	24	1	8	15	22	29	12	19	26	3	10	21	28	4	11	18
Joan SCULLY	A	A	LEFT								Victoria	Morris	P	P	P	A		
Sheena HITCHCOCK	P	P	P	P	P	P	P	A	P	P	A	A	P	A	P	P	P	A
Roberta WILDES	A	P	P	P	A	P	P	P	A	P	A	A	P	A	P	P	P	A
Helena PRESCOTT	P	P	P	P	P	P	P	P	P	P	P	P	P	P	A	P	P	P
Janet HARVEY	A	P	P	P	P	A	P	P	LEFT	Julia	Turner	P	A	P	P			
Kathryn GEBBIE	P	P	P	P	A	LEFT					Katie	Hawkes	P	P	P	P		
Linda SHEPPARD	A	P	P	P	P	A	P	A	P	P	P	P	P	P	P	P	P	P
Lesley BRAY	P	P	P	P	P	P	P	P	P	A	A	A	A	P	P	A	A	
Jan ROBERTSON	P	P	P	P	P	P	P	A	P	P	P	P	P	LEFT				
Sheena BROWN	A	P	P	LEFT	Jill D	Dougherty	P	P	P	P	A	P	A	A	A	P		
Lorraine CLARKE	A	A	P	P	A	P	P	P	A	P	P	A	A	A	A	A	LEFT	
Margaret SMITH	A	P	P	P	P	P	P	A	P	P	P	P	A	A	P	P	P	P
Lynn KEEN	P	P	P	P	P	P	P	P	P	A	P	P	P	A	P	P	P	P
Eleanor TASKER	P	P	P	P	P	A	P	A	A	P	P	P	P	A	P	P	P	A
Felicity CLARKE	P	P	P	P	P	P	P	P	P	P	P	A	A	P	A	P	P	A
Elnored JONES	P	P	P	P	P	P	P	P	P	P	P	P	P	P	A	P	P	P
Clare LOWE	P	P	P	A	P	P	P	P	P	P	P	P	P	P	P	P	P	P
Monique CHAMPAGNE	A	P	P	A	P	P	A	A	A	A	P	P	A	A	A	A	A	A
Lynda ALLEN	P	P	P	P	P	P	P	P	P	P	P	A	P	P	P	P	P	P
Glennis CUSS	P	P	P	P	P	P	P	P	P	P	P	P	P	P	P	P	P	P
Alixon PHILLIPS	A	P	P	P	P	P	P	P	P	P	P	P	P	LEFT				
Caren HARVEY	A	P	P	A	P	A	P	P	LEFT									
Wendy CLARKE	P	P	P	A	A	A	P	P	A	P	P	A	P	P	A	P	P	A
Susar LOWE	P	P	A	P	P	P	P	P	P	P	P	P	A	P	P	P	P	P
Heather SMITH	A	P	P	P	P	A	P	P	P	P	A	P	P	P	P	P	P	P
Carol DANE	P	P	P	P	P	P	P	P	P	P	P	P	P	P	P	P	P	P
Susar JOHNSON	P	P	A	P	P	P	P	P	P	P	P	P	P	A	A	A	A	A
Helen JOHNSON	P	P	P	P	P	P	P	P	P	P	P	P	P	A	A	P	P	P
Joy BAIRD	P	P	P	P	P	A	P	P	P	P	A	A	P	A	A	A	P	P
Janet PATTERSON	A	P	P	P	P	P	P	P	A	P	P	A	P	A	P	P	P	P

SUBSCRIPTIONS

REMARKS

SEPT.	OCT.		NOV.		DEC.		JAN.		FEB.		REMARKS
10 17 24	1 9	15 22 29	12 19 26	3 10 21 28	4 11 18						
A LEFT					3 3 3 A						FAIRY PIXIE 14.3.52
3 6 3 3 3 3 A 3 3 A A 3 A 3 - - A											PIXIE - Sixer 21.6.52
A - 3 3 A 6 3 3 A 3 A A 3 A 3 3 A											GNOME 22.10.52
6 - - 3 3 3 3 3 - 6 - 3 - A 6 3 3											FAIRY - Sixer 25.5.53
A 3 - - 3 A ³ 3 3 LEFT					6 A 3 3						GNOME ELF 21.3.53
3 3.6 3 A					3 3 3 3						FAIRY - Sixer 28.3.52
A 3 3 3 3 A 3 A 3 3 3 3 3 3 3 3 3											GNOME Sixer 11.12.52
3 3 3 3 3 3 - 3 3 3 A A A A 3 3 A A											ELF - Sixer 15.6.52
3 3 3 3 3 3 3 A 6 3 6 3 3 LEFT											GNOME - Sixer 23.1.52
A 3 3 LEFT	3 3 3 3 3				A 6 A A A 3						PIXIE ELF 19.10.52 22.3.52
A A 3 3 A 3 3 3 A 3 3 A A A A A LEFT											FAIRY 8.8.53
A 3 3 2 3 3 3 A 3 3 3 - A A 3 3 3 3											GNOME 1.10.53
3 3 3 3 3 3 3 3 A 3 3 3 A 3 - 3 3											GNOME 21.5.53
6 3 6 3 3 A - A 3 3 3 3 A 3 3 3 A											ELF 6.2.54
3 3 3 3 3 3 3 3 3 3 A A 3 A 3 3 A											FAIRY 30.10.53
3 3 3 3 3 3 - 3 6 3 3 3 3 A 3 3 3											PIXIE 13.7.54
3 3 3 A 3 3 3 3 3 3 3 3 3 3 3 3 3											ELF 11.8.53
A 3 3 A 3 A A A A 3 3 A A A A A A											PIXIE 24.12.52
3 3 3 3 3 3 3 3 3 3 3 3 3 3 3 3											PIXIE 9.8.54
3 3 3 3 3 3 3 3 3 3 3 3 3 3 3 3											GNOME ELF 19.8.54
A 3 3 3 3 3 3 3 3 3 3 3 3 LEFT											FAIRY 14.8.53
A 3 6 A 3 A ³ 3 3 LEFT											ELF 10.9.54
- 3 - A A A 6 - A 3 3 A 3 3 A 3 - A											FAIRY 9.2.55
3 3 A 3 3 3 3 3 3 3 3 A 3 3 3 3 3											ELF 27.3.55
A 3 3 3 3 A 6 - 3 3 A 3 3 3 3 3 -											GNOME 21.4.55
3 3 3 3 3 3 3 - 3 3 3 3 3 3 3 3 3											PIXIE 26.12.52
3 3 A 3 3 3 3 3 3 3 3 3 3 A A A A A											PIXIE 20.3.55
3 3 3 3 3 3 3 3 3 3 3 3 A A 3 3 3											FAIRY 20.3.55
3 3 - - A 3 3 - 3 A A - A A A - 3											FAIRY 10.2.53
3 3 3 3 3 3 3 A 3 6 A 3 A 3 3 3											ELF 10.4.54

496/67-5/2 X 5/9 6/9 4/9 5/3 6/3 5/3 3/9 4/6 5/5-5/3/9

ATTENDANCES

NAME

NAME	MARCH				APR				MAY				JUNE			JULY				
	4	11	18	25	1	8	15	22	29	6	13	20	27	10	17	24	1	8	15	24
Sheena HITCHCOCK	P	P	P	LEFT																
Lesley BRAY	P	P	P	LEFT																
Roberta WILDES	P	P	P	P	P	P	P	P	P	P	P	P	P	P	A	P	P	A	P	
Helena PRESCOTT	P	P	P	A	P	P	P	P	P	P	P	P	P	P	P	A	P	P	P	P
Linda SHEPPARD	A	P	P	P	P	P	P	P	P	P	P	P	P	A	P	P	P	P	P	P
Margaret SMITH	P	P	P	P	A	P	P	P	P	P	P	P	P	P	A	P	P	P	P	A
Lynn KEEN	P	P	P	P	P	P	P	P	P	P	P	P	P	A	P	P	P	P	P	P
Eleanor TASKER	P	A	P	P	P	P	P	P	P	P	P	P	A	P	P	A	P	P	P	P
Felicity CLARKE	A	P	P	P	P	P	P	P	P	P	P	P	P	P	P	P	P	P	P	LEFT
Elned JONES	P	P	P	P	P	P	P	P	P	P	P	P	A	P	P	P	P	P	P	P
Clare LOWE	P	P	P	P	P	P	P	P	P	P	P	P	P	P	P	P	P	P	P	P
Monique CHAMPAGNE	A	A	P	A	LEFT															
Lynda ALLEN	P	P	P	P	P	P	A	P	P	P	P	P	P	P	P	A	P	P	P	
Glennis CUSS	P	A	P	P	P	P	P	P	P	P	P	P	P	A	P	P	P	P	P	P
Wendy CLARKE	A	P	P	P	P	P	P	P	P	P	P	P	P	P	P	P	P	P	P	LEFT
Susan LOWE	P	P	P	A	P	P	P	P	P	P	P	P	P	P	P	P	P	P	P	P
Heather SMITH	P	P	P	P	P	P	P	A	P	P	P	P	P	A	P	P	P	P	P	A
Carol DANE	P	P	P	P	P	P	P	P	P	P	P	P	P	P	P	P	P	P	P	P
Susan JOHNSON	P	A	P	P	A	P	P	P	P	P	P	P	P	P	P	P	P	P	P	P
Helen JOHNSON	P	P	A	P	A	P	P	P	P	P	P	P	P	P	P	P	P	P	P	P
Joy BAIRD	A	P	P	A	P	P	A	A	A	A	A	A	A	LEFT						
Janet PATTERSON	P	P	P	A	P	A	P	P	P	A	A	A	A	LEFT						
Jill DOUGHOUBY	A	P	P	P	P	P	P	A	P	P	P	P	P	A	P	P	A	P	P	A
Victoria MORRIS	P	P	P	P	P	P	P	P	A	P	P	P	P	P	P	P	P	P	P	P
Julia TURNER	P	P	P	P	P	P	P	P	P	P	P	P	P	P	P	P	P	P	P	P
Katie HAWKES	P	A	P	P	P	P	P	P	P	P	P	P	P	P	P	P	A	P	P	P
Gillian BARRATT	P	P	P	P	P	P	P	P	P	P	P	P	P	P	P	P	P	P	P	P
Jane EAST				P	P	P	P	P	P	P	P	P	P	P	P	P	P	P	P	P
Lydia OTTER					P	P	P	P	P	P	P	P	P	P	P	P	A	P	P	P
Beverley DOUGHOUBY					P	P	P	P	P	P	P	P	P	P	P	A	A	P	A	A
Madeleine GIGG					P	P	A	P	P	A	P	P	A	P	P	A	P	A	P	P
	21	22	26	21	22	27	26	24	27	24	22	23	24	22	23	24	22	24	20	

SUBSCRIPTIONS

REMARKS

MARCH			APR.			MAY			JUNE			JULY						
4	11	18	25	1	29	6	13	20	27	10	17	24	1	8	15	24		
9	3	3	3	3	3	3	3	3	3	3	3	A	-	6	A	-	-	PIXIE - Sixer 21.6.52
3	3	3	3	3	3	3	3	3	3	3	3	3	3	3	3	3	3	ELF - Sixer 15.6.52
3	3	3	3	3	3	3	3	3	3	3	3	A	-	6	A	-	-	GNOME 22.10.52
3	6	3	A	3	-	3	6	-	3	-	3	A	-	6	3	3	3	FAIRY - Sixer 25.5.53.
A	3	3	3	3	3	3	3	3	3	3	3	A	3	3	3	3	3	GNOME - Sixer 11.12.52
3	3	3	3	A	3	3	3	3	3	3	3	-	A	3	6	-	A	GNOME 1.10.53
3	3	3	3	3	3	3	3	3	3	3	3	A	3	3	3	3	3	GNOME 21.5.53
6	A	3	3	3	3	3	3	3	3	3	3	A	3	3	A	3	3	ELF 6.2.54
A	6	3	3	3	3	3	3	-	3	3	3	3	3	3	3	3	LEFT	FAIRY 30.10.53
3	3	3	3	3	3	3	3	3	3	3	3	A	3	3	3	3	3	PIXIE 13.7.54
3	3	3	3	3	3	3	3	3	3	3	3	3	3	3	3	3	3	FAIRY 11.8.53
A	A	3	A	A	LEFT												PIXIE 24.12.52	
3	3	3	3	3	3	A	3	3	3	3	3	3	3	3	A	3	3	PIXIE 9.8.54
A	A	3	3	3	3	3	3	3	3	3	3	A	3	3	3	3	3	ELF 19.8.54
A	6	3	3	3	3	3	3	3	3	3	3	-	3	3	3	3	LEFT	FAIRY 9.2.55
3	3	3	A	3	3	3	3	3	3	3	3	3	3	3	2	4	3	ELF 27.3.55
6	3	3	3	6	3	3	A	3	3	6	A	3	3	3	A	3	3	GNOME 21.4.55
3	3	3	3	3	3	3	3	3	3	3	3	3	3	3	3	3	3	PIXIE - SIXER 26.12.52
3	A	3	3	A	3	3	3	3	3	3	3	3	3	3	3	3	3	PIXIE 20.3.55
3	3	A	3	A	3	3	3	3	3	3	3	3	3	3	3	3	3	FAIRY 20.3.55
A	3	3	A	3	3	A	A	A	A	A	LEFT						FAIRY 10.2.53	
3	3	3	A	3	A	3	3	3	A	A	A	LEFT						ELF 10.4.54
A	3	3	3	3	3	3	A	3	3	3	3	3	A	6	3	A	A	ELF SIXER GNOME 19.10.54
3	3	3	3	3	3	3	3	3	3	3	3	3	3	3	-	6	3	FAIRY 14.11.54
3	3	3	3	3	3	3	3	3	3	3	3	3	3	3	-	9	6	GNOME 1.8.54
3	A	3	3	3	3	3	3	3	3	3	3	3	3	A	6	3	-	ELF 9.8.55
-	3	-	3	3	3	3	3	3	3	3	3	3	3	3	3	3	3	PIXIE 27.1.54
			3	3	3	3	3	3	3	3	3	3	3	A	-	3	-	PIXIE 27.10.53
			-	3	3	3	3	-	6	3	3	3	3	6	3	3	-	ELF 2.2.56
			3	3	3	3	3	3	3	3	3	3	A	A	3	A	3	PIXIE 2.7.55
			3	3	3	3	3	3	3	3	3	3	A	3	3	A	3	GNOME 1.9.57

5/9/6/3/7/9 5/3 5/3 6/6/6/6 5/6 6/9 5/3 4/9 6/0 5/9 6/2 5/10 5/1-3/6

Passed Recruit Test	SECOND CLASS TEST												Badge Gained	Date	SERVICE STARS, STRIPES, PROFICIENCY BADGES, ETC.	Transferred to Guides	
	Six	Flags	Knots	Road Sense	Nature	Useful Articles or Darning	Sewing on Buttons	Health Rules	Hoop or Hopping	Skipping	Ball Throwing	Lay Table					
	LEFT	P	P	P	P	P		P	P	P		P					
	LEFT	P	P	P	P	P		P	P	P		P		1959 June 6 th			Sixer - LEFT.
	FAIRY	P	P	P	P	P		P	P	P		P		1959 SEPT 28 th			LEFT
	FAIRY	P	P	P	P	P		P	P	P		P		1959 JAN 11 th			LEFT
	ELF	P	P	P	P	P		P	P	P		P		1959 SEPT. 28 th			SIXER LEFT
	FAIRY	P	P	P	P	P		P	P	P		P		1959 SEPT. 28 th	61		SIXER LEFT Collectors.
	FAIRY	P	P	P	P	P		P	P	P		P		1959 SEPT. 28 th			↑ LEFT
	ELF	P	P	P	P	P		P	P	P		P		1960 July	7.61		Sixer LEFT
	LEFT																LEFT
	ELF	P	P	P	P	P		P	P	P		P		1959 SEPT. 28 th			SIXER LEFT
	LEFT	P			P												Sixer - LEFT
	GNOME	P	P	P	P	P		P	P	P		P		1959 SEPT 28 th	61		SIXER LEFT
	GNOME	P	P	P	P	P		P	P	P		P		1960 April 4 th	61		SIXER LEFT
	LEFT																LEFT
15.6.59	PIXIE	P	P	P	P	P		P	P	P		P		1960 July	61		SIXER LEFT Collectors
	LEFT																LEFT
	ELF		P		P			P	P	P		P					LEFT
	GNOME	P	P	P	P	P		P	P	P		P					LEFT
	GNOME																LEFT
	ELF																LEFT
	FAIRY								P	P	P	P					LEFT
	ELF								P		P	P					LEFT
	FAIRY	P			P	P		P	P	P		P					LEFT
	PIXIE	P	P	P	P	P		P	P	P		P					LEFT
	PIXIE	P	P	P	P	P		P	P	P		P					LEFT
	GNOME	P	P	P	P	P		P	P	P		P					LEFT
	FAIRY																LEFT
	ELF	P	P	P	P	P		P	P	P		P					LEFT
	PIXIE	P	P	P	P	P		P	P	P		P					LEFT
	FAIRY	P	P	P	P	P		P	P	P		P					LEFT
	GNOME																LEFT
	GNOME	P	P	P	P	P		P	P	P		P					LEFT

Animal lovers.
Collectors 18/LEFT

INTERMEDIATE TEST

NAME	ADDRESS	INTERMEDIATE TEST								Badge Gained
		Semaphore	Compass	Knitting	Fold Clothes	Skipping	Throw Ball	Clean Shoes	Message	Date
STEWART Louise	Spindrifft, Ashbury									
STEWART Linda	Spindrifft, Ashbury									
COYLE Kathleen		P	P	P	P	P	P	P	P	
FURTEK Julia		P				P			P	
HAYWARD Jacqueline		P	P	P	P	P	P	P	P	
MANDITT Susan	10, Ashbury Rd, S	P	P	P	P	P	P	P	P	1960 APRIL 4
PRIDHAM Angela	Holkham House,	P	P	P	P	P	P	P	P	1960 APRIL 4
PRIDHAM Philippa	" "	P	P	P	P	P	P	P	P	1960 JULY 11
RYDER Judith										
WHITE Jacqueline	Ashbury Rd,	P	P	P	P	P	P	P	P	? 1960
MYCROFT Jane										
BENFORD Judith	Pound Strss, S	P	P	P	P	P	P	P	P	1960 APRIL 4
ROBINSON Roxanne	8, Medlar Rd,	P	P	P	P	P	P	P	P	FEB. '6
BELCHER Ann										
JOHNSON Barbara		P	P	P	P	P	P	P	P	FEB. '6
TAPPIN Linda										
FURTEK Denise										
EAST Sally										
GOODALL Pat										
MERRY Susan										
GRIFFITHS Joy	19, Ashbury									
HUGHES Lyn	Police Station									
HUGHES Jane	Meadow Edge									
JENNER Susan				P		P				
KRUSZELYNCKY Lisa										
COTTON Nicola										
HIGGINS Ann							P			
SCULLY Joan	X Highwalth R		P		P			P	P	
HITCHCOCK Sheila	X	P	P	P	P	P	P	P	P	29/1/63
BANNAN Christine										
WILDES Roberta	1, Highwalth R	P	P		P	P	P	P	P	

Passed Recruit Test	Six	SECOND CLASS TEST											Badge Gained	Date	Age	Transferred to Guides	
		Flags	Knots	Road Sense	Nature	Useful Article or Darning	Sewing on Buttons	Health Rules	Hoop or Hopping	Shipping	Ball Throwing	Lay Table					Service Stars, Stripes, Proficiency Badges, Etc.
	FAIRY	P	P	P	P	P	P	P	P	P	P	P	P	26/6/61			SIXER
	ELF	P	P	P	P	P	P	P	P	P	P	P	P	6/11/61			LEFT
	FAIRY	P	P	P	P	P	P	P	P	P	P	P	P	10/7/61			LEFT
	GNOME	P	P	P	P	P	P	P	P	P	P	P	P	12/2/62	7/63		SIXER
	ELF	P	P	P	P	P	P	P	P	P	P	P	P	10/7/61	3/63		SIXER
	FAIRY	P	P	P	P	P	P	P	P	P	P	P	P	3/7/61			LEFT
	GNOME																LEFT
	ELF	P	P	P	P	P	P	P	P	P	P	P	P	16/10/61			LEFT
	FAIRY	P	P	P	P	P	P	P	P	P	P	P	P				LEFT
	ELF	P	P							P							LEFT
	FAIRY	P	P	P	P	P	P	P	P	P							LEFT
	GNOME	P	P	P	P	P	P	P	P	P	P	P	P	22/10/62			LEFT
	GNOME	P	P	P	P	P	P	P	P	P	P	P	P	15/9/62			LEFT
	PIXIE		P		P	P	P		P								LEFT
	PIXIE																LEFT
	ELF	P	P	P	P	P	P	P	P	P	P	P	P	26/11/62			LEFT
	FAIRY	P	P	P	P	P	P	P	P	P	P	P	P	12/11/62			LEFT
	PIXIE	P	P	P	P	P	P	P	P	P	P	P	P	22/10/62			LEFT
	PIXIE	P	P						P	P							LEFT
	GNOME																LEFT
	FAIRY	P															LEFT
	GNOME	P	P	P	P	P	P	P	P	P	P	P	P	22/10/62			LEFT
	PIXIE	P	P	P	P	P	P	P	P	P	P	P	P				LEFT
	PIXIE	P	P	P	P	P	P	P	P	P	P	P	P	10/12/62			LEFT
	ELF	P	P	P	P	P	P	P	P	P	P	P	P	10/12/62			LEFT
	FAIRY	P	P		P	P	P	P	P		P	P	P				LEFT
	ELF	P	P						P								LEFT
	FAIRY	P	P						P	P	P	P	P				LEFT
	PIXIE	P	P	P	P	P	P	P	P	P	P	P	P	10/6/63			LEFT
	FAIRY	P	P	P	P	P	P	P	P	P	P	P	P	10/6/63			LEFT

Entertainers
Cooks
LEFT

Entertainers
Knitters 18/6

FIRST CLASS TEST

I		II				III	IV							
National Anthem	Compass	Plant or Bulb	Parcel	Knitting	Fire Laying and Lighting	Cooking	Making Tea	Folding Clothes	Throwing Ball	Skipping	Message	First-aid	Fire	Clean Shoes

✓ ✓ ✓ ✓ ✓ ✓ ✓ ✓ ✓ ✓ ✓ ✓ ✓ ✓

Badge Gained
Date

SERVICE STARS, STRIPES,
PROFICIENCY BADGES, ETC.

Transferred to Guides

Date

1/7/63 SIXER LEFT.

LEFT
LEFT
SIXER

X X



DATE	RECEIPTS	£	S	D.
30. 9. 58.	Subscriptions for September		6	3
31. 10. 58.	" " October.		6	9½
30. 11. 58.	Subscriptions for November.		9	2½
17. 12. 58.	" " December.		8	2½
17. 12. 58	Cheque from Faringdon + District Guide Ass.	5	0	0
17. 12. 58.	Raffle for Doll in Pack.		8	3
31. 1. 59	Subscriptions for January.		8	6
28. 2. 59	Subscriptions for February.		9	3
28. 2. 59.	Share of Guide Pantomime profits.	2	0	0
17. 4. 59.	Jumble Stall at Youth Club Jumble Sale.	6	11	2½
31. 4. 59	Subscriptions for March.		13	3
31. 4. 59	" " April.		6	11
31. 5. 59.	" " May.		10	4
31. 6. 59	" " June .		11	7
31. 7. 59	" " July		13	8
18. 8. 59.	1 st . Shivenham Brownie contribution to Coach for Revels.	1	5	0
18. 8. 59.	Cheque from Fête Committee.	2	10	0
30. 9. 59	Subscriptions for September.		6	6

 23 4 11

DATE	EXPENDITURE	£	S	D.
Oct 1958	The Guider			6
Oct 11 th 58	Register.		8	7
Oct 11 th 58	Postage (Register)			9
Nov 1958	Recruit Badges. (12)		6	0
Nov 1958	Enrolment Cards. (12)		2	0
Nov 1958	Postage + P. Order			4½
Nov 1958	1 gallon Paraffin for stoves.		1	11
Nov 1958	The Guider			6
Dec 1958	The Guider			6
Dec 1958	Brownie Presents.		6	9
Jan 1959	The Guider			6
Feb 1959	Use of A.C.F. Hut Shriwenham - heat + lighting	2	5	6
Feb 1959	The Guider			6
Feb 1959	'Bus for Thinking Day Service.	1	0	0
Mar 1959	The Guider.			6
April 1959	The Guider.			6
May 1959	Use of A.C.F. Hut Shriwenham.	1	0	0
June 1959	"The Guider."			6
June 1959	Rope + String for Revels.		1	3
" "	Coloured paper " "		4	0
" "	'Bus to Brownie Revels. *	2	10	0
" "	18 Emblems		7	10½
" "	Tip to 'Bus Driver *		2	6
July 1959	2 Enrolment Badges.		1	0
Aug. July	- 2 'Guiders'		1	0
Sept 1959	July - Tawny Owl's present.		8	0
Sept.	Guider.			6
Sept.	6 Golden Bars.		2	6
	Balance c/Fwd.	13	10	11
		23	4	11

DATE	EXPENDITURE	£	S.	D.
1959				
Oct	Guides			6
Nov.	Enrolment cards		4	-
Nov.	6 Brownie Badges		4	-
Nov.	12 First year stars		4	-
Nov.	12 'Berks' Badges		2	6
Nov.	Guides			6
Nov.	Brownie Christmas presents + Squash	1	3	3
Dec.	Guides			6
1960				
Jan	"			9
"	Pack Contribution	1	1	-
Feb.	Present to Mr. & Mrs. Cox		5	-
"	Guides			9
"	8 doz. '2 nd Shrivenham' Name Tapes		7	-
"	Tape for 'Sixes' + 'Seconds' stripes		1	4
March	6 Golden Bars		2	6
"	Coach for Thinking Day Service	1	-	-
May	3 Guides		2	3
June	Contribution to Refugee Year 17@6d		8	6
"	Advert. for Jubilee Sale in P.O.			6
"	Brownie Journal		4	11
"	Programmes for Rally		7	6
July	2 Guides		1	6
"	Brown Owl's Present		19	9
"	Ice Cream for Party		4	10
"	3 doz. '2 nd Shrivenham Name Tapes		3	9
Aug.	'Fairy' + 'Elf' Emblems		3	-
Sept.	Book Token - leaving present Tawny Owl		15	4
Oct.	Brownie Handbooks		4	6
Oct.	2 Berks. Does		6	4
"	Compass		3	6
	Balance c/Fwd.	13	15	7
		22	19	4

DATE	RECEIPTS	£	s	D.
1960	Balance B/Fwd.	13	15	7
31 st Oct.	Subscriptions for October.		19	-
28 th Nov.	" " November		16	6
12 th Dec.	" " December		8	6
30 th Jan.	" " January		13	-
27 th Feb.	" " February		15	9
27 th Mar.	" " March		15	10½
25 th Apr.	April		4	6
28 th May	Received for J. Harveip badge			6
" "	Subscriptions for May	1	2	10
26 th June	" " June	1	2	5
1 st July	Received too late for Fête fund		4	8
26 th "	Subscriptions for July	1	2	-
25 th Sept.	" " September		15	-
6 th Nov.	" " October	1	7	8½
		24	3	10

DATE	EXPENDITURE	£	S.	D.
1960				
4 Oct.	Test Cards (1½ doz)		5	8
5 "	Badges, stars, etc.		18	6
"	Apples for Halloween		2	4
8 Nov.	Badges for Brown Owl + Tawny Owl		3	-
2 Dec.	Presents for Brownie Party + Chocolate for game		18	3
7 1961	Ice cream and Squash for Brownies		9	8
0 Jan	3 Guides		2	3
"	Gas			1
1 "	Tape + Enrollment cards		2	7½
1 "	Pack Contribution	1	5	6
6 13 Feb.	Gas			4
0 27 "	"			2
7 "	Road Safety Booklets		3	9
0 March	Gas			2
5 April	24 Golden Bays; 12 Berks Does + 6 Enrollment cards		13	10
1 May	Enrolment cards, Play book, etc.		4	5
1 May	10 Pixie, 6 Fairy, 6 Gnome, 3 Elf badges + 6 Test Cards		14	6
"	6 Golden Hands, 6 Brownie Badges, 6 2 nd yr. stars		9	3
6 "	Miss Sinclair's Wreath		3	4
June	Gas for 'Parents' Evening'		1	-
"	Raffle tickets for Fête		2	-
"	Items for Fête		4	2
"	" " "		6	-
July	1 yd. yellow tape			8
"	3 collector's badges + 2 Brownie wings		2	4
"	Squash, rolls, sausages for Revels + picnic	1	1	9
Oct.	6 Enrol. badges, 6 1 st , 2 nd , 3 rd yr stars, 6 Berks does. + P.O.		12	6
"	Test Cards - 1 doz		3	8
"	" " 1 "		3	8
"	2 Enrollment badges + P.O.		1	6
	Balance c/Fwd		14	6
			20	16
			24	3 10

DATE

RECEIPTS

		£	s	D.
1961	Balance B/Fwd.			
12 th Nov.	Received for J. Harvey's badge	14	6	11 1/2
27 th "	Subscriptions for November			4
14 th Dec.	" "			19
29 th Jan.	" "			6
12th Feb.	Withdrawn from P.O.			10
12 th Feb.	Received for J. Harvey's badge			3
19 th Feb.	Subscriptions for February			15 9 1/2
26 th Mar.	" "			
9 th Apr.	" "			1 -
28 th May	Received for E. Tasker's badge			14 6
28 th "	Subscriptions for May	1		2 8
4 th June	Received surplus on uniform			4 6
25 th "	Subscriptions for June			6
26 th "	" "	1		10 3
18 th Sept.	Received for " July			2 6
25 th "	Received for J. Harvey's Test Card	1		9 3
25 th "	" " L. Keen's " "	1		- 10
	Subscriptions for September			4
	Received for sweets			4
		18	3	
				2
		23	17	9

DATE	EXPENDITURE	£	S.	D.
1961				
Nov.	6 Brownie badges, 2 Guides flashes + P.O.	3	7	
Dec.	4 " Jester & Booklover badges + P.O.	2	11	
"	Pencils - party	9	4	
"	Choc. game 1/-, Balloons 4/-, Sweets 6/3	}		
"	Decorations 2/6, Choc. 2/-, Ice cream 4/6			
"	Squash 5/-, presents 9d			
Jan.	Brownie Emblems & tape	9	9½	
"	1 yr's Guides	9	-	
"	Books, etc.	15	9	
"	First Aid Kit	5	6	
Feb.	Pack Contribution (+P.O.)	1	18	3
"	6 Brownie Wings (+P.O.)		1	9
"	Brownie Pennant	3	12	5
March	Sticking Plaster		2	-
"	Gas for tea		2	
Apr.	" "		2	
"	Easter Eggs		6	-
"	Transfers Pads + postage		3	1½
"	6 Badges + 6 Berks Docs		6	5
"	Enrolment Cards (+P.O.)		3	5
June	6 Brownie badges + 4 Proficiency badges + P.O.		6	6
"	Crape paper		1	-
July	Gas for tea (2 wks)		1	-
"	Sausages, rolls, squash & sweets for picnic	1	4	7½
"	Donation for wool for refugee family		4	-
Aug.	4 Proficiency badges + 4 Golden Hands + P.O.		4	6
Sept.	Books - songs etc.		3	3
"	Book Token - leaving present A. McCrea	1	-	4
	Balance C/Fwd.		9	16 1½
		23	17	9

DATE	EXPENDITURE	£	s.	D.
27 th Sept.	Emblems, Tape & Test cards		9	10½
12 th Nov.	2 doz. stars, 1 doz. Golden Bars, 6 Badges, + P.O.		19	6
4 th Dec.	Towards coach to Revels		7	6
	Presents for party 26 @ 6d		13	-
	Towards Guides' present	1	13	-
	Post cards			6
<u>1963</u>				
28 th Jan.	Squash for party		5	-
	Pack Contribution	4	10	-
9 th Mar.	2 Wings + 2 postage		1	10½
15 th "	Coach for Thinking Day		13	9
18 th "	Tea 1/9 Sugar 1/5 Milk 1/5 Gas 6 for tea 'Flying up' ceremony.		4	8
7 th May	½ doz. Brownie Test cards		5	8
20 th "	6 Badges, 6 Golden bars, 6 Golden Hands, etc. + P.O.		15	3
18 th June	3 Cooks' badges + post.		1	9
22 nd "	Squash for Revels.		10	-
1 st July	Stamps for Transfer forms		1	-
6 th "	Register & 3 doz. sixer badges		19	5
8 th "	Gas			6
15 th "	Golden bars & Brownie badges (+ P.O.)		14	6
18 th "	Half share coach to Revels		17	6
24 th "	Squash for Revels.		6	6
			16	20½
	Balance to New Register		3	19 5
			20	1 5½