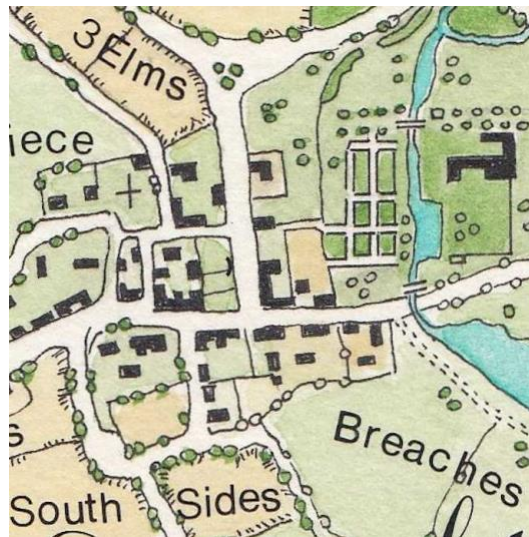


## Park Cottages aka Beehive Cottages, Horne's Corner, Shrivenham

Some notes on their history by Neil B. Maw



By looking at a series of maps starting with circa 1750, it can be seen that this particular junction and corner of Shrivenham has been occupied throughout that time. This fits in with Historic England's general description (Below). It's likely that some of the cottages were at one time farm buildings that were converted into cottages, and it is from the 18<sup>th</sup> century phase that Blacksmith, William Horne, may have worked his Smithy and gave his name to the locale '*Horne's Corner*.'



1750

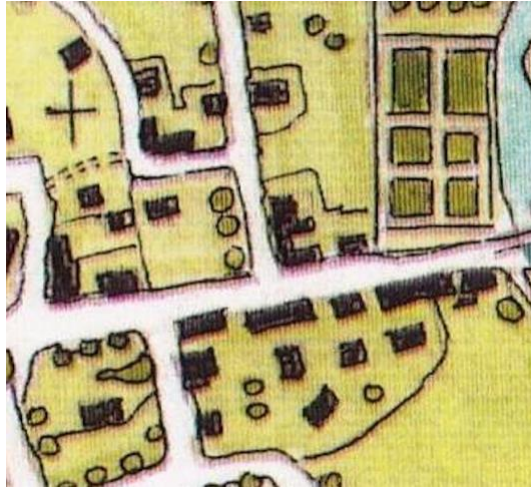
Historic England Listing:

2. Late C17, early C18 seven cottage range of rubble stone and brick dressings with a thatched roof half hipped at each end and 7 brick stacks. Each cottage is of 1 storey and attic, 2 bays except No, 13 at the E end of which more later. Nos 1-11 have 6 pane 2 light casements to the eyebrow dormers and 3 light casements under cambered heads to the ground floor, some with glazing bars others plain. C20 wooden porches shelter plank doors. No. 13 is currently being renovated. It is of 1 storey and attic, 3 bays with 2 three light windows to the ground floor and a plank door. Above, the dormers are being altered to top lit 4 pane wooden casements. This cottage has some ironstone rubble in its courses and could be earlier than the rest of the range.

Listing NGR: SU2427289039



1761



1770

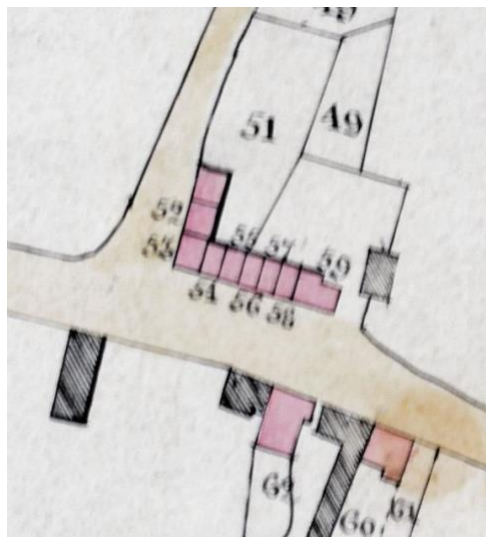


1815

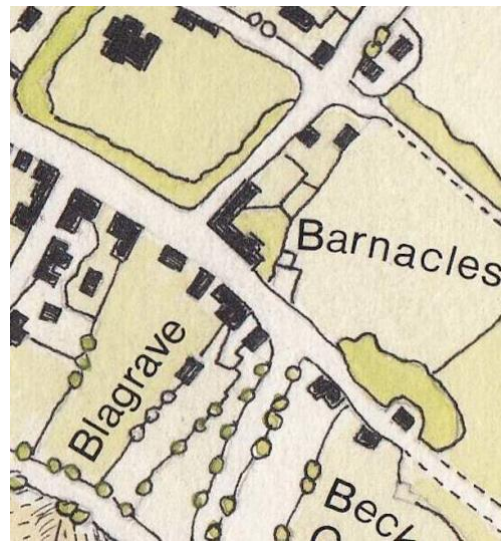
The map drawn up by George Merryweather (1815 - 1821) has proved to be very accurate. He was the Steward of the Barrington Estate to whom the cottages belonged. It seemed

likely that it's around that period that the layout of the cottages become more like they are today.

The Tithe map for 1838 is most interesting in that it shows a huge amount of detail for the whole village and shows the cottages very clearly. However, unfortunately, we are not in possession of the key to the numbers.



1838



1843

By the time of the Tithe Survey in 1843/44 it's clear that there were 10 tenements in the block and the later Barrington Estate survey of 1866 showed the same number